

DNAAF1 Rabbit pAb

Catalog No.: A16593

Basic Information

Observed MW

80kDa

Calculated MW

80kDa

Category

Primary antibody

Applications

ELISA, WB

Cross-Reactivity

Rat

Background

The protein encoded by this gene is cilium-specific and is required for the stability of the ciliary architecture. It is involved in the regulation of microtubule-based cilia and actin-based brush border microvilli. Mutations in this gene are associated with primary ciliary dyskinesia-13. Alternative splicing results in multiple transcript variants.

Recommended Dilutions

WB 1:500 - 1:2000

Immunogen Information

Gene ID

123872

Swiss Prot

Q8NEP3

Immunogen

Recombinant fusion protein containing a sequence corresponding to amino acids 516-725 of human DNAAF1 (NP_848547.4).

Synonyms

swt; DAU1; ODA7; CILD13; LRRC50; DNAAF1

Contact

☎ | 400-999-6126

✉ | cn.market@abclonal.com.cn

🌐 | www.abclonal.com.cn

Product Information

Source

Rabbit

Isotype

IgG

Purification

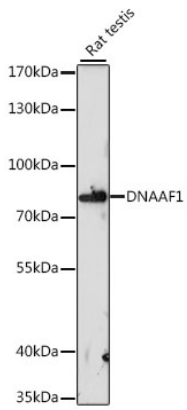
Affinity purification

Storage

Store at -20°C. Avoid freeze / thaw cycles.

Buffer: PBS with 0.01% thimerosal, 50% glycerol, pH 7.3.

Validation Data



Western blot analysis of lysates from rat testis, using DAAAF1 Rabbit pAb (A16593) at 1:1000 dilution.
Secondary antibody: HRP Goat Anti-Rabbit IgG (H+L) (AS014) at 1:10000 dilution.
Lysates/proteins: 25µg per lane.
Blocking buffer: 3% nonfat dry milk in TBST.
Detection: ECL Basic Kit (RM00020).
Exposure time: 60s.