

SOGA1 Rabbit pAb

Catalog No.: A16597 **1 Publications**

Basic Information

Observed MW

80kDa

Calculated MW

160kDa

Category

Primary antibody

Applications

ELISA, WB

Cross-Reactivity

Human, Mouse, Rat

Background

Predicted to be involved in insulin receptor signaling pathway; negative regulation of gluconeogenesis; and regulation of autophagy. Located in extracellular space.

Recommended Dilutions

WB 1:500 - 1:2000

Immunogen Information

Gene ID

140710

Swiss Prot

O94964

Immunogen

Recombinant fusion protein containing a sequence corresponding to amino acids 650-750 of human SOGA1 (NP_542194.2).

Synonyms

SOGA; KIAA0889; C20orf117; SOGA1

Contact

☎ | 400-999-6126

✉ | cn.market@abclonal.com.cn

🌐 | www.abclonal.com.cn

Product Information

Source

Rabbit

Isotype

IgG

Purification

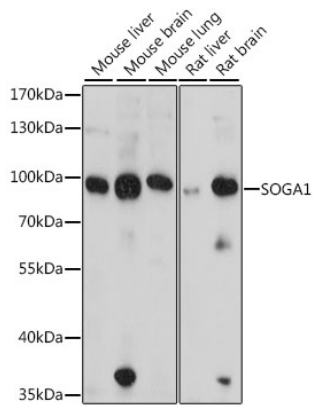
Affinity purification

Storage

Store at -20°C. Avoid freeze / thaw cycles.

Buffer: PBS with 0.01% thimerosal, 50% glycerol, pH7.3.

Validation Data



Western blot analysis of various lysates using SOGA1 Rabbit pAb (A16597) at 1:1000 dilution.
Secondary antibody: HRP Goat Anti-Rabbit IgG (H+L) (AS014) at 1:10000 dilution.
Lysates/proteins: 25 μ g per lane.
Blocking buffer: 3% nonfat dry milk in TBST.
Detection: ECL Basic Kit (RM00020).
Exposure time: 15s.