

# MPP7 Rabbit pAb

Catalog No.: A16598

## Basic Information

### Observed MW

55kDa

### Calculated MW

66kDa

### Category

Primary antibody

### Applications

ELISA, WB

### Cross-Reactivity

Mouse

## Background

The protein encoded by this gene is a member of the p55 Stardust family of membrane-associated guanylate kinase (MAGUK) proteins, which function in the establishment of epithelial cell polarity. This family member forms a complex with the polarity protein DLG1 (discs, large homolog 1) and facilitates epithelial cell polarity and tight junction formation. Polymorphisms in this gene are associated with variations in site-specific bone mineral density (BMD). Alternative splicing results in multiple transcript variants.

## Recommended Dilutions

WB 1:500 - 1:2000

## Immunogen Information

### Gene ID

143098

### Swiss Prot

Q5T2T1

### Immunogen

Recombinant fusion protein containing a sequence corresponding to amino acids 297-576 of human MPP7 (NP\_775767.2).

### Synonyms

MPP7

## Contact

☎ | 400-999-6126

✉ | [cn.market@abclonal.com.cn](mailto:cn.market@abclonal.com.cn)

🌐 | [www.abclonal.com.cn](http://www.abclonal.com.cn)

## Product Information

### Source

Rabbit

### Isotype

IgG

### Purification

Affinity purification

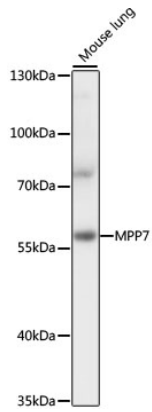
### Storage

Store at -20°C. Avoid freeze / thaw cycles.

Buffer: PBS with 0.01% thimerosal, 50% glycerol, pH7.3.

## Validation Data

---



Western blot analysis of lysates from mouse lung, using MPP7 Rabbit pAb (A16598) at 1:1000 dilution.  
Secondary antibody: HRP Goat Anti-Rabbit IgG (H+L) (AS014) at 1:10000 dilution.  
Lysates/proteins: 25µg per lane.  
Blocking buffer: 3% nonfat dry milk in TBST.  
Detection: ECL Basic Kit (RM00020).  
Exposure time: 1s.