

NOTUM Rabbit pAb

Catalog No.: A16600

Basic Information

Observed MW

56kDa

Calculated MW

56kDa

Category

Primary antibody

Applications

ELISA, WB

Cross-Reactivity

Human

Background

Enables palmitoleyl hydrolase activity. Involved in negative regulation of Wnt signaling pathway and protein depalmitoylation. Acts upstream of or within bone development and regulation of bone mineralization. Predicted to be located in endoplasmic reticulum lumen and extracellular region.

Recommended Dilutions

WB 1:500 - 1:2000

Immunogen Information

Gene ID

147111

Swiss Prot

Q6P988

Immunogen

Recombinant fusion protein containing a sequence corresponding to amino acids 20-320 of human NOTUM (NP_848588.3).

Synonyms

hNOTUM; NOTUM

Contact

☎ | 400-999-6126

✉ | cn.market@abclonal.com.cn

🌐 | www.abclonal.com.cn

Product Information

Source

Rabbit

Isotype

IgG

Purification

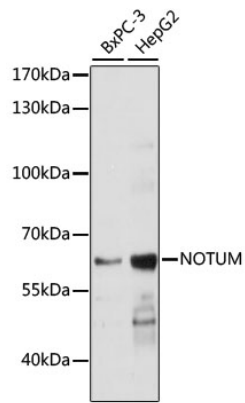
Affinity purification

Storage

Store at -20°C. Avoid freeze / thaw cycles.

Buffer: PBS with 0.01% thimerosal, 50% glycerol, pH7.3.

Validation Data



Western blot analysis of various lysates using NOTUM Rabbit pAb (A16600) at 1:1000 dilution.
Secondary antibody: HRP Goat Anti-Rabbit IgG (H+L) (AS014) at 1:10000 dilution.
Lysates/proteins: 25 μ g per lane.
Blocking buffer: 3% nonfat dry milk in TBST.
Detection: ECL Basic Kit (RM00020).
Exposure time: 1s.