

SPC24 Rabbit pAb

Catalog No.: A16601 **1 Publications**

Basic Information

Observed MW

26kDa

Calculated MW

22kDa

Category

Primary antibody

Applications

ELISA, WB

Cross-Reactivity

Human, Mouse

Background

Predicted to be involved in cell division. Located in nucleolus and nucleoplasm. Part of Ndc80 complex.

Recommended Dilutions

WB 1:1000 - 1:5000

Immunogen Information

Gene ID

147841

Swiss Prot

Q8NBT2

Immunogen

Recombinant fusion protein containing a sequence corresponding to amino acids 1-197 of human SPC24 (NP_872319.1).

Synonyms

SPBC24; SPC24

Contact

 | 400-999-6126

 | cn.market@abclonal.com.cn

 | www.abclonal.com.cn

Product Information

Source

Rabbit

Isotype

IgG

Purification

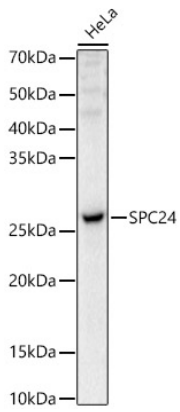
Affinity purification

Storage

Store at -20°C. Avoid freeze / thaw cycles.

Buffer: PBS with 0.05% proclin300, 50% glycerol, pH7.3.

Validation Data



Western blot analysis of HeLa, using SPC24 antibody (A16601) at 1:2000 dilution.
Secondary antibody: HRP Goat Anti-Rabbit IgG (H+L) (AS014) at 1:10000 dilution.
Lysates/proteins: 25µg per lane.
Blocking buffer: 3% nonfat dry milk in TBST.
Detection: ECL Basic Kit (RM00020).
Exposure time: 5s.