

PPM1K Rabbit pAb

Catalog No.: A16602 **1 Publications**

Basic Information

Observed MW

36kDa

Calculated MW

41kDa

Category

Primary antibody

Applications

ELISA, WB

Cross-Reactivity

Human, Mouse, Rat

Background

This gene encodes a member of the PPM family of Mn^{2+}/Mg^{2+} -dependent protein phosphatases. The encoded protein, essential for cell survival and development, is targeted to the mitochondria where it plays a key role in regulation of the mitochondrial permeability transition pore.

Recommended Dilutions

WB 1:500 - 1:2000

Immunogen Information

Gene ID

152926

Swiss Prot

Q8N3J5

Immunogen

Recombinant fusion protein containing a sequence corresponding to amino acids 89-351 of human PPM1K (NP_689755.3).

Synonyms

BDP; PTMP; PP2Cm; MSUDMV; PP2Ckappa; UG0882E07; PPM1K

Contact

☎ | 400-999-6126

✉ | cn.market@abclonal.com.cn

🌐 | www.abclonal.com.cn

Product Information

Source

Rabbit

Isotype

IgG

Purification

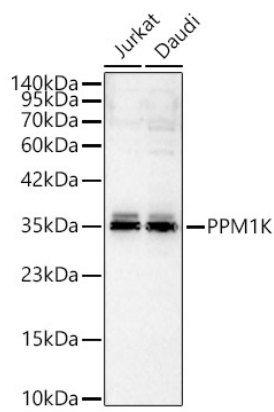
Affinity purification

Storage

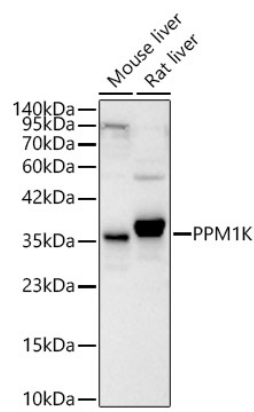
Store at -20°C. Avoid freeze / thaw cycles.

Buffer: PBS with 0.01% thimerosal, 50% glycerol, pH7.3.

Validation Data



Western blot analysis of various lysates, using PPM1K Rabbit pAb (A16602) at 1:1000 dilution.
Secondary antibody: HRP Goat Anti-Rabbit IgG (H+L) (AS014) at 1:10000 dilution.
Lysates/proteins: 25ug per lane.
Blocking buffer: 3% nonfat dry milk in TBST.
Detection: ECL Basic Kit (RM00020).
Exposure time: 60s.



Western blot analysis of various lysates, using PPM1K Rabbit pAb (A16602) at 1:1000 dilution.
Secondary antibody: HRP Goat Anti-Rabbit IgG (H+L) (AS014) at 1:10000 dilution.
Lysates/proteins: 25ug per lane.
Blocking buffer: 3% nonfat dry milk in TBST.
Detection: ECL Basic Kit (RM00020).
Exposure time: 60s.