

FREM1 Rabbit pAb

Catalog No.: A16603

Basic Information

Observed MW

72kDa

Calculated MW

244kDa

Category

Primary antibody

Applications

WB, ELISA

Cross-Reactivity

Human, Mouse, Rat

Background

This gene encodes a basement membrane protein that may play a role in craniofacial and renal development. Mutations in this gene have been associated with bifid nose with or without anorectal and renal anomalies. Alternatively spliced transcript variants encoding different isoforms have been described. PubMed ID 19940113 describes one such variant that initiates transcription within a distinct, internal exon; the resulting shorter isoform (named Toll-like/interleukin-1 receptor regulator, TILRR) is suggested to be a co-receptor of the interleukin 1 receptor family and may regulate receptor function and Toll-like receptor/interleukin 1 receptor signal transduction, contributing to the control of inflammatory response activation.

Recommended Dilutions

WB 1:500 - 1:2000

ELISA Recommended starting concentration is 1 µg/mL. Please optimize the concentration based on your specific assay requirements.

Immunogen Information

Gene ID

158326

Swiss Prot

Q5H8C1

Immunogen

Recombinant protein (or fragment). This information is considered to be commercially sensitive.

Synonyms

BNAR; MOTA; TILRR; TRIGNO2; C9orf143; C9orf145; C9orf154; FREM1

Contact

☎ | 400-999-6126

✉ | cn.market@abclonal.com.cn

🌐 | www.abclonal.com.cn

Product Information

Source

Rabbit

Isotype

IgG

Purification

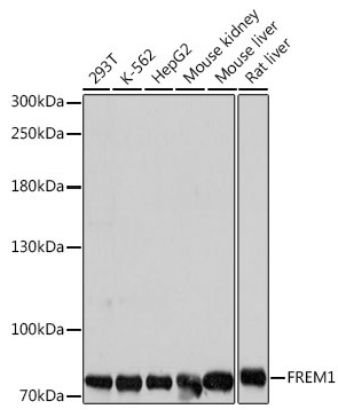
Affinity purification

Storage

Store at -20°C. Avoid freeze / thaw cycles.

Buffer: PBS with 0.01% thimerosal, 50% glycerol, pH7.3.

Validation Data



Western blot analysis of various lysates using FREM1 Rabbit pAb (A16603) at 1:1000 dilution.
Secondary antibody: HRP-conjugated Goat anti-Rabbit IgG (H+L) (AS014) at 1:10000 dilution.
Lysates/proteins: 25µg per lane.
Blocking buffer: 3% nonfat dry milk in TBST.
Detection: ECL Basic Kit (RM00020).
Exposure time: 5s.