

THSD7A Rabbit pAb

Catalog No.: A16610

Basic Information

Observed MW

260kDa

Calculated MW

185kDa

Category

Primary antibody

Applications

ELISA, WB

Cross-Reactivity

Human

Background

The protein encoded by this gene is found almost exclusively in endothelial cells from placenta and umbilical cord. The encoded protein appears to interact with alpha(V)beta(3) integrin and paxillin to inhibit endothelial cell migration and tube formation. This protein may be involved in cytoskeletal organization. Variations in this gene may be associated with low bone mineral density in osteoporosis.

Recommended Dilutions

WB 1:500 - 1:2000

Immunogen Information

Gene ID

221981

Swiss Prot

Q9UPZ6

Immunogen

Recombinant fusion protein containing a sequence corresponding to amino acids 48-350 of human THSD7A (NP_056019.1).

Synonyms

THSD7A

Contact

 | 400-999-6126

 | cn.market@abclonal.com.cn

 | www.abclonal.com.cn

Product Information

Source

Rabbit

Isotype

IgG

Purification

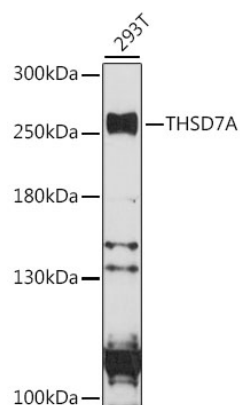
Affinity purification

Storage

Store at -20°C. Avoid freeze / thaw cycles.

Buffer: PBS with 0.01% thimerosal, 50% glycerol, pH7.3.

Validation Data



Western blot analysis of lysates from 293T cells, using THSD7A Rabbit pAb (A16610) at 1:1000 dilution.
Secondary antibody: HRP Goat Anti-Rabbit IgG (H+L) (AS014) at 1:10000 dilution.
Lysates/proteins: 25µg per lane.
Blocking buffer: 3% nonfat dry milk in TBST.
Detection: ECL Basic Kit (RM00020).
Exposure time: 90s.