

ATP11C Rabbit pAb

Catalog No.: A16616

Basic Information

Observed MW

157kDa

Calculated MW

129kDa

Category

Primary antibody

Applications

ELISA, WB

Cross-Reactivity

Human, Mouse

Background

Enables phosphatidylethanolamine flippase activity and phosphatidylserine flippase activity. Predicted to be involved in phospholipid translocation; positive regulation of B cell differentiation; and pre-B cell differentiation. Located in endoplasmic reticulum and plasma membrane. Is integral component of plasma membrane. Implicated in X-linked congenital hemolytic anemia.

Recommended Dilutions

WB 1:500 - 1:2000

Immunogen Information

Gene ID

286410

Swiss Prot

Q8NB49

Immunogen

Recombinant fusion protein containing a sequence corresponding to amino acids 430-650 of human ATP11C (NP_775965.2).

Synonyms

ATPIG; ATPIQ; HACXL; ATP11C

Contact

☎ | 400-999-6126

✉ | cn.market@abclonal.com.cn

🌐 | www.abclonal.com.cn

Product Information

Source

Rabbit

Isotype

IgG

Purification

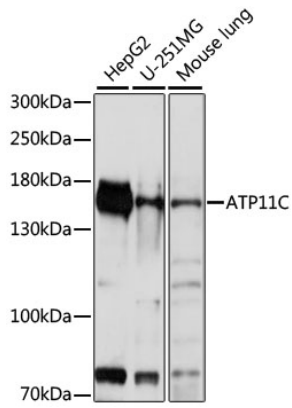
Affinity purification

Storage

Store at -20°C. Avoid freeze / thaw cycles.

Buffer: PBS with 0.01% thimerosal, 50% glycerol, pH7.3.

Validation Data



Western blot analysis of various lysates using ATP11C Rabbit pAb (A16616) at 1:1000 dilution.
Secondary antibody: HRP Goat Anti-Rabbit IgG (H+L) (AS014) at 1:10000 dilution.
Lysates/proteins: 25 μ g per lane.
Blocking buffer: 3% nonfat dry milk in TBST.
Detection: ECL Basic Kit (RM00020).
Exposure time: 5s.