

Cpsf4l Rabbit pAb

Catalog No.: A16622

Basic Information

Observed MW

22kDa

Calculated MW

21kDa

Category

Primary antibody

Applications

WB, ELISA

Cross-Reactivity

Mouse

Background

Predicted to be involved in pre-mRNA cleavage required for polyadenylation. Predicted to be part of mRNA cleavage and polyadenylation specificity factor complex. Is expressed in central nervous system and retina. Orthologous to human CPSF4L (cleavage and polyadenylation specific factor 4 like).

Recommended Dilutions

WB 1:500 - 1:2000

ELISA Recommended starting concentration is 1 µg/mL. Please optimize the concentration based on your specific assay requirements.

Immunogen Information

Gene ID

52670

Swiss Prot

A6NMK7

Immunogen

Recombinant protein (or fragment). This information is considered to be commercially sensitive.

Synonyms

D11Ert636e; 0610010C04Rik; 1500000C01Rik; Cpsf4l

Contact

☎ | 400-999-6126

✉ | cn.market@abclonal.com.cn

🌐 | www.abclonal.com.cn

Product Information

Source

Rabbit

Isotype

IgG

Purification

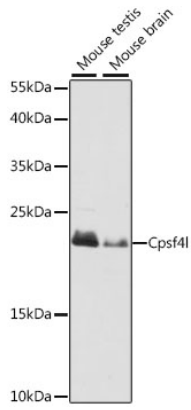
Affinity purification

Storage

Store at -20°C. Avoid freeze / thaw cycles.

Buffer: PBS with 0.01% thimerosal, 50% glycerol, pH7.3.

Validation Data



Western blot analysis of various lysates using Cpsf41 Rabbit pAb (A16622) at 1:1000 dilution.
Secondary antibody: HRP-conjugated Goat anti-Rabbit IgG (H+L) (AS014) at 1:10000 dilution.
Lysates/proteins: 25µg per lane.
Blocking buffer: 3% nonfat dry milk in TBST.
Detection: ECL Basic Kit (RM00020).
Exposure time: 10s.