

Epn2 Rabbit pAb

Catalog No.: A16623

Basic Information

Observed MW

68kDa

Calculated MW

68kDa

Category

Primary antibody

Applications

WB, ELISA

Cross-Reactivity

Human, Mouse, Rat

Background

Predicted to enable clathrin binding activity and phospholipid binding activity. Acts upstream of or within Notch signaling pathway; embryonic organ development; and in utero embryonic development. Predicted to be located in intracellular membrane-bounded organelle.

Predicted to be part of clathrin coat of endocytic vesicle. Predicted to be active in endosome and plasma membrane. Orthologous to human EPN2 (epsin 2).

Recommended Dilutions

WB 1:500 - 1:1000

ELISA Recommended starting concentration is 1 µg/mL. Please optimize the concentration based on your specific assay requirements.

Immunogen Information

Gene ID

13855

Swiss Prot

O95208

Immunogen

Synthetic peptide. This information is considered to be commercially sensitive.

Synonyms

Ibp2; 9530051D10Rik; Epn2

Contact

☎ | 400-999-6126

✉ | cn.market@abclonal.com.cn

🌐 | www.abclonal.com.cn

Product Information

Source

Rabbit

Isotype

IgG

Purification

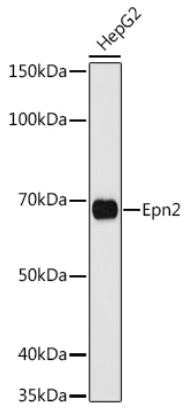
Affinity purification

Storage

Store at -20°C. Avoid freeze / thaw cycles.

Buffer: PBS with 0.01% thimerosal, 50% glycerol, pH7.3.

Validation Data



Western blot analysis of lysates from HepG2 cells, using Epn2 Rabbit pAb (A16623) at 1:1000 dilution.
Secondary antibody: HRP-conjugated Goat anti-Rabbit IgG (H+L) (AS014) at 1:10000 dilution.
Lysates/proteins: 25µg per lane.
Blocking buffer: 3% nonfat dry milk in TBST.
Detection: ECL Basic Kit (RM00020).
Exposure time: 90s.