

CARD16 Rabbit pAb

Catalog No.: A16624

Basic Information

Observed MW

28kDa

Calculated MW

23kDa

Category

Primary antibody

Applications

ELISA, WB

Cross-Reactivity

Mouse

Background

Enables several functions, including CARD domain binding activity; cysteine-type endopeptidase inhibitor activity; and enzyme binding activity. Involved in several processes, including negative regulation of cysteine-type endopeptidase activity; regulation of gene expression; and regulation of signal transduction. Part of protease inhibitor complex.

Recommended Dilutions

WB 1:500 - 1:2000

Immunogen Information

Gene ID

114769

Swiss Prot

Q5EG05

Immunogen

A synthetic peptide corresponding to a sequence within amino acids 50-150 of human CARD16 (NP_001017534.1).

Synonyms

COP; COP1; PSEUDO-ICE; LLID-114769; CARD16

Contact

 | 400-999-6126

 | cn.market@abclonal.com.cn

 | www.abclonal.com.cn

Product Information

Source

Rabbit

Isotype

IgG

Purification

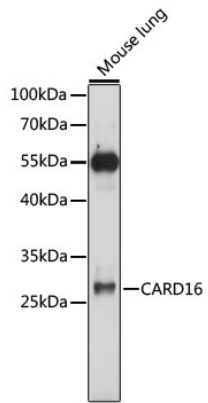
Affinity purification

Storage

Store at -20°C. Avoid freeze / thaw cycles.

Buffer: PBS with 0.01% thimerosal, 50% glycerol, pH7.3.

Validation Data



Western blot analysis of lysates from mouse lung, using CARD16 Rabbit pAb (A16624) at 1:1000 dilution.
Secondary antibody: HRP Goat Anti-Rabbit IgG (H+L) (AS014) at 1:10000 dilution.
Lysates/proteins: 25µg per lane.
Blocking buffer: 3% nonfat dry milk in TBST.
Detection: ECL Basic Kit (RM00020).
Exposure time: 90s.