

# ECE2 Rabbit pAb

Catalog No.: A16636

## Basic Information

### Observed MW

120kDa

### Calculated MW

28kDa/83kDa/86kDa/91kDa/99kDa

### Category

Primary antibody

### Applications

WB

### Cross-Reactivity

Human

## Background

Enables metalloendopeptidase activity. Involved in peptide hormone processing. Located in cytoplasmic vesicle membrane.

## Recommended Dilutions

WB 1:500 - 1:1000

## Immunogen Information

### Gene ID

9718

### Swiss Prot

O60344

### Immunogen

A synthetic peptide of human ECE2

### Synonyms

EEF1AKMT4; ECE2

## Contact

☎ | 400-999-6126

✉ | [cn.market@abclonal.com.cn](mailto:cn.market@abclonal.com.cn)

🌐 | [www.abclonal.com.cn](http://www.abclonal.com.cn)

## Product Information

### Source

Rabbit

### Isotype

IgG

### Purification

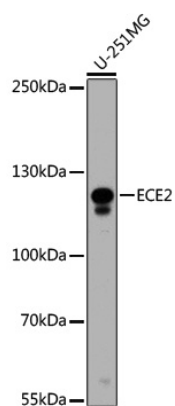
Affinity purification

### Storage

Store at 4°C (regular) or -20°C (long term). Avoid freeze / thaw cycles.  
Buffer: PBS with 0.02% sodium azide, pH7.3.

## Validation Data

---



Western blot analysis of extracts of U-251MG cells, using ECE2 antibody (A16636) at dilution.  
Secondary antibody: HRP Goat Anti-Rabbit IgG (H+L) (AS014) at 1:10000 dilution.  
Lysates/proteins: 25µg per lane.  
Blocking buffer: 3% nonfat dry milk in TBST.