

SLC17A1 Rabbit pAb

Catalog No.: A16642

Basic Information

Observed MW

51kDa

Calculated MW

51kDa

Category

Primary antibody

Applications

ELISA, WB

Cross-Reactivity

Rat

Background

Predicted to enable sialic acid transmembrane transporter activity. Involved in urate metabolic process and urate transport. Located in apical plasma membrane.

Recommended Dilutions

WB 1:500 - 1:1000

Immunogen Information

Gene ID

6568

Swiss Prot

Q14916

Immunogen

A synthetic peptide corresponding to a sequence within amino acids 1-100 of human SLC17A1 (NP_005065.2).

Synonyms

NPT1; NPT-1; NAPI-1; SLC17A1

Contact

☎ | 400-999-6126

✉ | cn.market@abclonal.com.cn

🌐 | www.abclonal.com.cn

Product Information

Source

Rabbit

Isotype

IgG

Purification

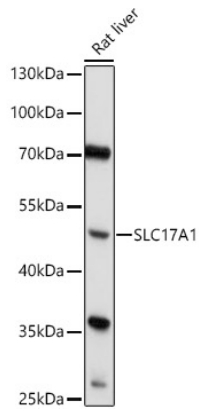
Affinity purification

Storage

Store at -20°C. Avoid freeze / thaw cycles.

Buffer: PBS with 0.01% thimerosal, 50% glycerol, pH7.3.

Validation Data



Western blot analysis of lysates from Rat liver, using SLC17A1 Rabbit pAb (A16642) at 1:1000 dilution.
Secondary antibody: HRP Goat Anti-Rabbit IgG (H+L) (AS014) at 1:10000 dilution.
Lysates/proteins: 25µg per lane.
Blocking buffer: 3% nonfat dry milk in TBST.
Detection: ECL Basic Kit (RM00020).
Exposure time: 60s.