

BAF250 Rabbit pAb

Catalog No.: A16648 **3 Publications**

Basic Information

Observed MW

260kDa

Calculated MW

242kDa

Category

Primary antibody

Applications

ELISA, WB

Cross-Reactivity

Human, Mouse, Rat

Background

Enables ATP-dependent chromatin remodeler activity. Contributes to nucleosome binding activity. Acts upstream of or within several processes, including animal organ development; embryonic morphogenesis; and toxin transport. Located in chromatin. Part of SWI/SNF complex; nBAF complex; and npBAF complex. Is expressed in several structures, including alimentary system; brain; early conceptus; genitourinary system; and sensory organ. Used to study Coffin-Siris syndrome. Human ortholog(s) of this gene implicated in Coffin-Siris syndrome 2; breast cancer; carcinoma (multiple); gastrointestinal system cancer (multiple); and neuroblastoma. Orthologous to human ARID1A (AT-rich interaction domain 1A).

Recommended Dilutions

WB 1:500 - 1:2000

Immunogen Information

Gene ID

93760

Swiss Prot

A2BH40

Immunogen

A synthetic peptide corresponding to a sequence within amino acids 1300-1400 of mouse BAF250 (NP_001074288.1).

Synonyms

Osa1; BAF250; BAF250a; Smarcf1; 1110030E03Rik

Contact

☎ | 400-999-6126

✉ | cn.market@abclonal.com.cn

🌐 | www.abclonal.com.cn

Product Information

Source

Rabbit

Isotype

IgG

Purification

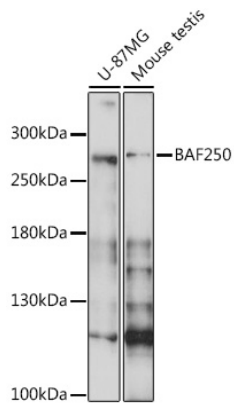
Affinity purification

Storage

Store at -20°C. Avoid freeze / thaw cycles.

Buffer: PBS with 0.02% sodium azide, 50% glycerol, pH 7.3.

Validation Data



Western blot analysis of extracts of various cell lines, using BAF250 antibody (A16648) at 1:500 dilution.
Secondary antibody: HRP Goat Anti-Rabbit IgG (H+L) (AS014) at 1:10000 dilution.
Lysates/proteins: 25 μ g per lane.
Blocking buffer: 3% nonfat dry milk in TBST.
Detection: ECL Basic Kit (RM00020).
Exposure time: 15s.