

TMEM100 Rabbit pAb

Catalog No.: A16653 **1 Publications**

Basic Information

Observed MW

14kDa

Calculated MW

14kDa

Category

Primary antibody

Applications

ELISA, WB

Cross-Reactivity

Human, Mouse

Background

Involved in BMP signaling pathway. Located in several cellular components, including endoplasmic reticulum; perikaryon; and perinuclear region of cytoplasm.

Recommended Dilutions

WB 1:500 - 1:2000

Immunogen Information

Gene ID

55273

Swiss Prot

Q9NV29

Immunogen

A synthetic peptide corresponding to a sequence within amino acids 50 to the C-terminus of human TMEM100 (NP_001093110.1).

Synonyms

TMEM100

Contact

☎ | 400-999-6126

✉ | cn.market@abclonal.com.cn

🌐 | www.abclonal.com.cn

Product Information

Source

Rabbit

Isotype

IgG

Purification

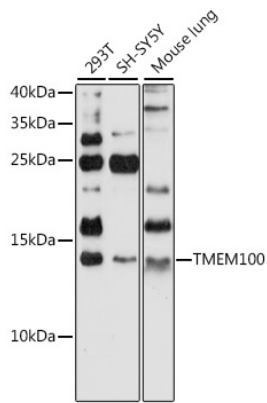
Affinity purification

Storage

Store at -20°C. Avoid freeze / thaw cycles.

Buffer: PBS with 0.01% thimerosal, 50% glycerol, pH7.3.

Validation Data



Western blot analysis of various lysates using TMEM100 Rabbit pAb (A16653) at 1:1000 dilution.
Secondary antibody: HRP Goat Anti-Rabbit IgG (H+L) (AS014) at 1:10000 dilution.
Lysates/proteins: 25µg per lane.
Blocking buffer: 3% nonfat dry milk in TBST.
Detection: ECL Basic Kit (RM00020).
Exposure time: 90s.