

# DRP1 Rabbit pAb

Catalog No.: A16661 **7 Publications**

## Basic Information

**Observed MW**

82kDa/78-

**Calculated MW**

82kDa

**Category**

Primary antibody

**Applications**

WB, IF/ICC, IHC-P, ELISA

**Cross-Reactivity**

Human, Mouse, Rat

## Background

This gene encodes a member of the dynamin superfamily of GTPases. The encoded protein mediates mitochondrial and peroxisomal division, and is involved in developmentally regulated apoptosis and programmed necrosis. Dysfunction of this gene is implicated in several neurological disorders, including Alzheimer's disease. Mutations in this gene are associated with the autosomal dominant disorder, encephalopathy, lethal, due to defective mitochondrial and peroxisomal fission (EMPF). Alternative splicing results in multiple transcript variants encoding different isoforms.

## Recommended Dilutions

**WB** 1:1000 - 1:5000**IF/ICC** 1:50 - 1:200**IHC-P** 1:200 - 1:800**ELISA** Recommended starting concentration is 1 µg/mL. Please optimize the concentration based on your specific assay requirements.

## Immunogen Information

**Gene ID**

10059

**Swiss Prot**

O00429

**Immunogen**

Recombinant protein (or fragment). This information is considered to be commercially sensitive.

**Synonyms**

DLP1; DRP1; DVLP; EMPF; OPA5; EMPF1; DYMPLE; HDYNIV

## Contact

 | 400-999-6126 | [cn.market@abclonal.com.cn](mailto:cn.market@abclonal.com.cn) | [www.abclonal.com.cn](http://www.abclonal.com.cn)

## Product Information

**Source**

Rabbit

**Isotype**

IgG

**Purification**

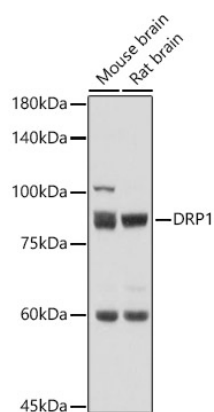
Affinity purification

**Storage**

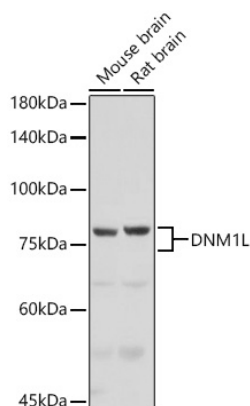
Store at -20°C. Avoid freeze / thaw cycles.

Buffer: PBS containing 50% glycerol, preserved with proclin300 or sodium azide (as specified on the Certificate of Analysis), pH 7.3.

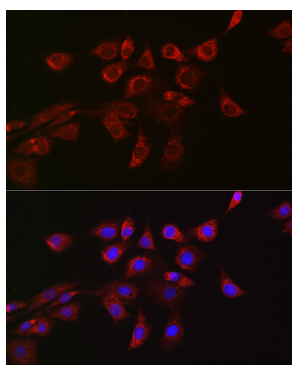
## Validation Data



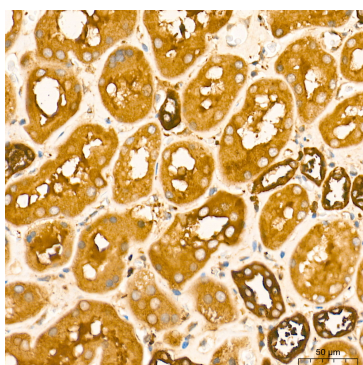
Western blot analysis of various lysates using DRP1 Rabbit pAb (A16661) at 1:500 dilution. Secondary antibody: HRP-conjugated Goat anti-Rabbit IgG (H+L) (AS014) at 1:10000 dilution. Lysates/proteins: 25µg per lane. Blocking buffer: 3% nonfat dry milk in TBST. Detection: ECL Basic Kit (RM00020). Exposure time: 1s.



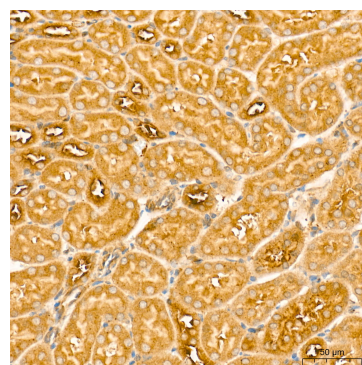
Western blot analysis of various lysates using DRP1 Rabbit pAb (A16661) at 1:1000 dilution incubated overnight at 4°C. Secondary antibody: HRP-conjugated Goat anti-Rabbit IgG (H+L) (AS014) at 1:10000 dilution. Lysates/proteins: 25 µg per lane. Blocking buffer: 3% nonfat dry milk in TBST. Detection: ECL Basic Kit (RM00020). Exposure time: 3s.



Immunofluorescence analysis of NIH/3T3 cells using DRP1 Rabbit pAb (A16661) at dilution of 1:50 (40x lens). Secondary antibody: Cy3-conjugated Goat anti-Rabbit IgG (H+L) (AS007) at 1:500 dilution. Blue: DAPI for nuclear staining.



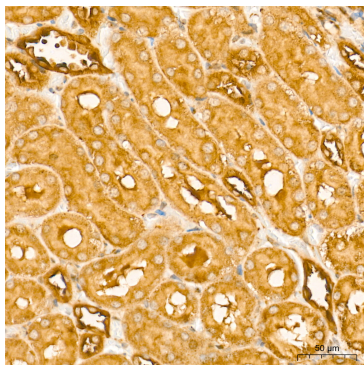
Immunohistochemistry analysis of paraffin-embedded Human kidney tissue using DRP1 Rabbit pAb (A16661) at a dilution of 1:300 (40x lens). High pressure antigen retrieval performed with 0.01M Tris-EDTA Buffer (pH 9.0) prior to IHC staining.



Immunohistochemistry analysis of paraffin-embedded Mouse kidney tissue using DRP1 Rabbit pAb (A16661) at a dilution of 1:300 (40x lens). High pressure antigen retrieval performed with 0.01M Tris-EDTA Buffer (pH 9.0) prior to IHC staining.

## Validation Data

---



Immunohistochemistry analysis of paraffin-embedded rat kidney tissue using DRP1 Rabbit pAb (A16661) at a dilution of 1:300 (40x lens). High pressure antigen retrieval performed with 0.01M Tris-EDTA Buffer (pH 9.0) prior to IHC staining.