

# CD147/BSG Rabbit pAb

Catalog No.: A16662 **1 Publications**

## Basic Information

### Observed MW

38-65kDa/59-64kDa

### Calculated MW

42kDa

### Category

Primary antibody

### Applications

ELISA, WB, IP

### Cross-Reactivity

Human, Mouse, Rat

## Background

The protein encoded by this gene, basigin, is a plasma membrane protein that is important in spermatogenesis, embryo implantation, neural network formation, and tumor progression. Basigin is also a member of the immunoglobulin superfamily, ubiquitously expressed in various tissues. Multiple transcript variants encoding different isoforms have been found for this gene.

## Recommended Dilutions

**WB** 1:500 - 1:1000

**IP** 0.5µg-4µg antibody for  
200µg-400µg extracts of  
whole cells

## Immunogen Information

### Gene ID

682

### Swiss Prot

P35613

### Immunogen

A synthetic peptide corresponding to a sequence within amino acids 286-385 of human CD147/CD147/BSG (NP\_001719.2).

### Synonyms

OK; 5F7; TCSF; CD147; EMPRIN; HAB18G; EMMPRIN; CD147/BSG

## Contact

☎ | 400-999-6126

✉ | [cn.market@abclonal.com.cn](mailto:cn.market@abclonal.com.cn)

🌐 | [www.abclonal.com.cn](http://www.abclonal.com.cn)

## Product Information

### Source

Rabbit

### Isotype

IgG

### Purification

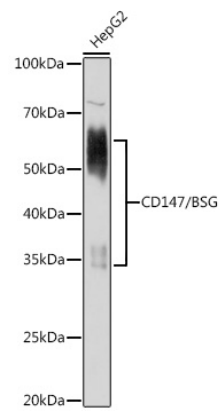
Affinity purification

### Storage

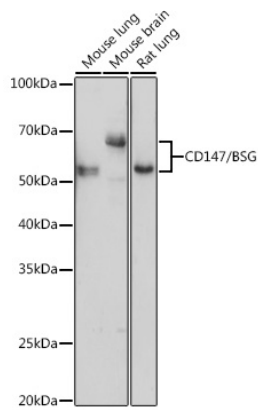
Store at -20°C. Avoid freeze / thaw cycles.

Buffer: PBS with 0.01% thimerosal, 50% glycerol, pH7.3.

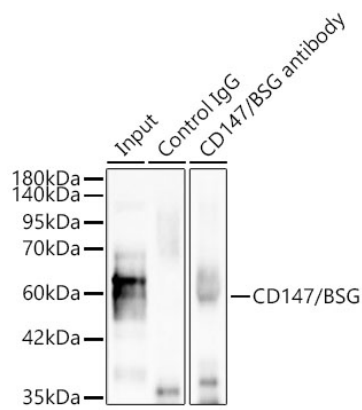
Validation Data



Western blot analysis of lysates from HepG2 cells, using CD147/BSG Rabbit pAb (A16662) at 1:1000 dilution.  
Secondary antibody: HRP Goat Anti-Rabbit IgG (H+L) (AS014) at 1:10000 dilution.  
Lysates/proteins: 25µg per lane.  
Blocking buffer: 3% nonfat dry milk in TBST.  
Detection: ECL Basic Kit (RM00020).  
Exposure time: 10s.



Western blot analysis of various lysates using CD147/BSG Rabbit pAb (A16662) at 1:1000 dilution.  
Secondary antibody: HRP Goat Anti-Rabbit IgG (H+L) (AS014) at 1:10000 dilution.  
Lysates/proteins: 25µg per lane.  
Blocking buffer: 3% nonfat dry milk in TBST.  
Detection: ECL Basic Kit (RM00020).  
Exposure time: 180s.



Immunoprecipitation of CD147/BSG in 200 µg extracts from Hep G2 cells using 0.5 µg CD147/BSG Rabbit pAb (A16662). Western blot analysis was performed using CD147/BSG Rabbit pAb (A16662) at 1:2000 dilution.