

SCN5A Rabbit pAb

Catalog No.: A16665

Basic Information

Observed MW

230-280kDa

Calculated MW

227kDa

Category

Primary antibody

Applications

WB,ELISA

Cross-Reactivity

Mouse

Background

The protein encoded by this gene is an integral membrane protein and tetrodotoxin-resistant voltage-gated sodium channel subunit. This protein is found primarily in cardiac muscle and is responsible for the initial upstroke of the action potential in an electrocardiogram. Defects in this gene have been associated with long QT syndrome type 3 (LQT3), atrial fibrillation, cardiomyopathy, and Brugada syndrome 1, all autosomal dominant cardiac diseases. Alternative splicing results in several transcript variants encoding different isoforms.

Recommended Dilutions

WB 1:500 - 1:1000

ELISA Recommended starting concentration is 1 µg/mL. Please optimize the concentration based on your specific assay requirements.

Immunogen Information

Gene ID

6331

Swiss Prot

Q14524

Immunogen

A synthetic peptide corresponding to a sequence within amino acids 1950-2016 of human SCN5A (NP_932173.1).

Synonyms

HB1; HB2; HH1; IVF; VF1; HBBD; ICCD; LQT3; SSS1; CDCD2; CMD1E; CMPD2; PFHB1; Nav1.5; SCN5A

Contact

☎ | 400-999-6126

✉ | cn.market@abclonal.com.cn

🌐 | www.abclonal.com.cn

Product Information

Source

Rabbit

Isotype

IgG

Purification

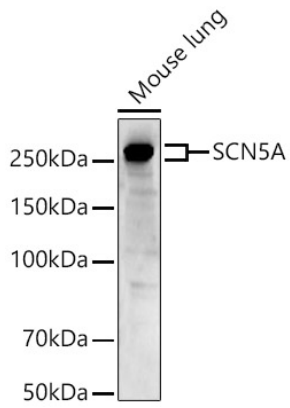
Affinity purification

Storage

Store at -20°C. Avoid freeze / thaw cycles.

Buffer: PBS with 0.05% proclin300,50% glycerol,pH7.3.

Validation Data



Western blot analysis of lysates from Mouse lung, using SCN5A Rabbit pAb (A16665) at 1:1000 dilution.
Secondary antibody: HRP-conjugated Goat anti-Rabbit IgG (H+L) (AS014) at 1:10000 dilution.
Lysates/proteins: 25µg per lane.
Blocking buffer: 3% nonfat dry milk in TBST.
Detection: ECL Basic Kit (RM00020).
Exposure time: 40s.