

eIF4EBP1 Rabbit pAb

Catalog No.: A16667

Basic Information

Observed MW

Calculated MW

13kDa

Category

Primary antibody

Applications

ELISA, IHC-P

Cross-Reactivity

Human, Mouse, Rat

Background

This gene encodes one member of a family of translation repressor proteins. The protein directly interacts with eukaryotic translation initiation factor 4E (eIF4E), which is a limiting component of the multisubunit complex that recruits 40S ribosomal subunits to the 5' end of mRNAs. Interaction of this protein with eIF4E inhibits complex assembly and represses translation. This protein is phosphorylated in response to various signals including UV irradiation and insulin signaling, resulting in its dissociation from eIF4E and activation of mRNA translation.

Recommended Dilutions

IHC-P 1:50 - 1:200

Immunogen Information

Gene ID

1978

Swiss Prot

Q13541

Immunogen

Recombinant fusion protein containing a sequence corresponding to amino acids 1-118 of human eIF4EBP1 (NP_004086.1).

Synonyms

BP-1; 4EBP1; 4E-BP1; PHAS-I; eIF4EBP1

Contact

☎ | 400-999-6126

✉ | cn.market@abclonal.com.cn

🌐 | www.abclonal.com.cn

Product Information

Source

Rabbit

Isotype

IgG

Purification

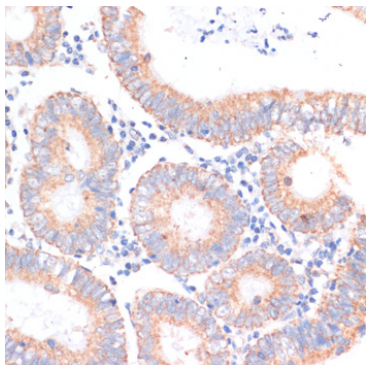
Affinity purification

Storage

Store at -20°C. Avoid freeze / thaw cycles.

Buffer: PBS with 0.02% sodium azide, 50% glycerol, pH 7.3.

Validation Data



Immunohistochemistry analysis of paraffin-embedded human colon carcinoma using eIF4EBP1 Rabbit pAb (A16667) at dilution of 1:100 (40x lens). Perform microwave antigen retrieval with 10 mM PBS buffer pH 7.2 before commencing with IHC staining protocol.