

ROS1 Rabbit pAb

Catalog No.: A16669 **2 Publications**

Basic Information

Observed MW

263kDa

Calculated MW

264kDa

Category

Primary antibody

Applications

ELISA, WB

Cross-Reactivity

Human, Mouse, Rat

Background

This proto-oncogene, highly-expressed in a variety of tumor cell lines, belongs to the sevenless subfamily of tyrosine kinase insulin receptor genes. The protein encoded by this gene is a type I integral membrane protein with tyrosine kinase activity. The protein may function as a growth or differentiation factor receptor.

Recommended Dilutions

WB 1:500 - 1:2000

Immunogen Information

Gene ID

6098

Swiss Prot

P08922

Immunogen

A synthetic peptide corresponding to a sequence within amino acids 1934-2232 of human ROS1 (NP_002935.2?).

Synonyms

ROS; MCF3; c-ros-1; ROS1

Contact

 | 400-999-6126

 | cn.market@abclonal.com.cn

 | www.abclonal.com.cn

Product Information

Source

Rabbit

Isotype

IgG

Purification

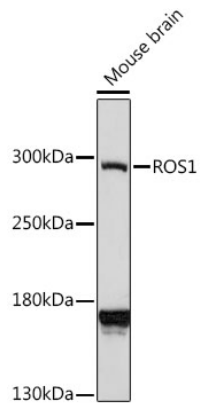
Affinity purification

Storage

Store at -20°C. Avoid freeze / thaw cycles.

Buffer: PBS with 0.01% thimerosal, 50% glycerol, pH7.3.

Validation Data



Western blot analysis of extracts of mouse brain, using ROS1 antibody (A16669) at 1:1000 dilution.
Secondary antibody: HRP Goat Anti-Rabbit IgG (H+L) (AS014) at 1:10000 dilution.
Lysates/proteins: 25 μ g per lane.
Blocking buffer: 3% nonfat dry milk in TBST.
Detection: ECL Enhanced Kit (RM00021).
Exposure time: 3min.