

Lamin B1 Rabbit pAb

Catalog No.: A16685 **3 Publications**

Basic Information

Observed MW

70kDa

Calculated MW

66kDa

Category

Primary antibody

Applications

WB,IF/ICC,IP,ELISA

Cross-Reactivity

Human, Mouse, Rat

Background

This gene encodes one of the two B-type lamin proteins and is a component of the nuclear lamina. A duplication of this gene is associated with autosomal dominant adult-onset leukodystrophy (ADLD). Alternative splicing results in multiple transcript variants.

Recommended Dilutions

WB 1:500 - 1:2000

IF/ICC 1:50 - 1:200

IP 0.5µg-4µg antibody for
200µg-400µg extracts of
whole cells

ELISA Recommended starting
concentration is 1 µg/mL.
Please optimize the
concentration based on
your specific assay
requirements.

Immunogen Information

Gene ID

4001

Swiss Prot

P20700

Immunogen

A synthetic peptide corresponding to a sequence within amino acids 361-460 of human Lamin B1 (NP_005564.1).

Synonyms

LMN; ADLD; LMN2; LMNB; MCPH26; Lamin B1

Contact

 | 400-999-6126

 | cn.market@abclonal.com.cn

 | www.abclonal.com.cn

Product Information

Source

Rabbit

Isotype

IgG

Purification

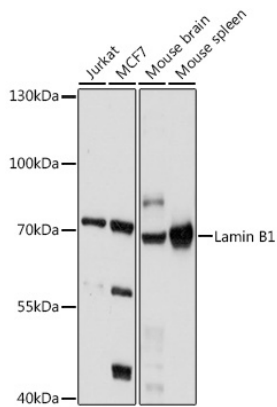
Affinity purification

Storage

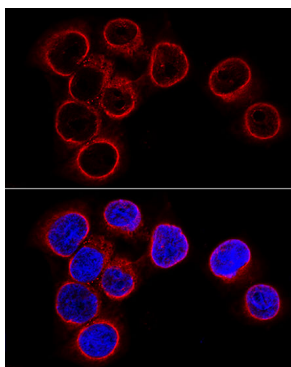
Store at -20°C. Avoid freeze / thaw cycles.

Buffer: PBS with 0.05% proclin300,50% glycerol,pH7.3.

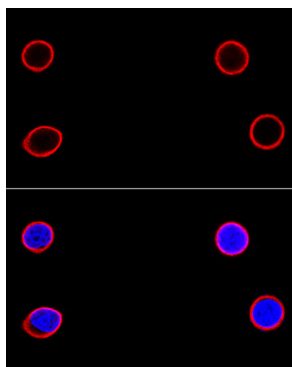
Validation Data



Western blot analysis of various lysates using Lamin B1 Rabbit pAb (A16685) at 1:1000 dilution. Secondary antibody: HRP-conjugated Goat anti-Rabbit IgG (H+L) (AS014) at 1:10000 dilution. Lysates/proteins: 25µg per lane. Blocking buffer: 3% nonfat dry milk in TBST. Detection: ECL Basic Kit (RM00020). Exposure time: 10s.



Confocal immunofluorescence analysis of HeLa cells using Lamin B1 Rabbit pAb (A16685) at dilution of 1:100 (60x lens). Blue: DAPI for nuclear staining.



Confocal immunofluorescence analysis of MCF-7 cells using Lamin B1 Rabbit pAb (A16685) at dilution of 1:100 (60x lens). Blue: DAPI for nuclear staining.