

PRB4 Rabbit pAb

Catalog No.: A16702

Basic Information

Observed MW

31kDa

Calculated MW

31kDa

Category

Primary antibody

Applications

WB,ELISA

Cross-Reactivity

Mouse, Rat

Background

This gene encodes a member of the heterogeneous family of basic, proline-rich, human salivary glycoproteins. The encoded preproprotein undergoes proteolytic processing to generate one or more mature peptides before secretion from the parotid glands. Multiple alleles of this gene exhibiting variations in the length of the tandem repeats have been identified. The reference genome encodes the "Small" allele. This gene is located in a cluster of closely related salivary proline-rich proteins on chromosome 12. Alternative splicing results in multiple transcript variants encoding different isoforms that may undergo similar proteolytic processing.

Recommended Dilutions

WB 1:500 - 1:2000

ELISA Recommended starting concentration is 1 µg/mL. Please optimize the concentration based on your specific assay requirements.

Immunogen Information

Gene ID

5545

Swiss Prot

P10163

Immunogen

Recombinant protein (or fragment). This information is considered to be commercially sensitive.

Synonyms

Po; PRB4

Contact

☎ | 400-999-6126

✉ | cn.market@abclonal.com.cn

🌐 | www.abclonal.com.cn

Product Information

Source

Rabbit

Isotype

IgG

Purification

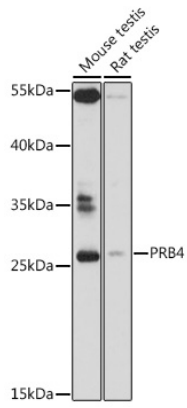
Affinity purification

Storage

Store at -20°C. Avoid freeze / thaw cycles.

Buffer: PBS with 0.01% thimerosal, 50% glycerol, pH7.3.

Validation Data



Western blot analysis of various lysates using PRB4 Rabbit pAb (A16702) at 1:1000 dilution.
Secondary antibody: HRP-conjugated Goat anti-Rabbit IgG (H+L) (AS014) at 1:10000 dilution.
Lysates/proteins: 25µg per lane.
Blocking buffer: 3% nonfat dry milk in TBST.
Detection: ECL Basic Kit (RM00020).
Exposure time: 3min.