

NLRC5 Rabbit pAb

Catalog No.: A16710

Basic Information

Observed MW

202kDa

Calculated MW

205kDa

Category

Primary antibody

Applications

WB,ELISA

Cross-Reactivity

Mouse

Background

This gene encodes a member of the caspase recruitment domain-containing NLR family. This gene plays a role in cytokine response and antiviral immunity through its inhibition of NF-kappa-B activation and negative regulation of type I interferon signaling pathways.

Recommended Dilutions

WB 1:500 - 1:2000

ELISA Recommended starting concentration is 1 µg/mL. Please optimize the concentration based on your specific assay requirements.

Immunogen Information

Gene ID

84166

Swiss Prot

Q86WI3

Immunogen

Recombinant fusion protein containing a sequence corresponding to amino acids 1-240 of human NLRC5 (NP_115582.4).

Synonyms

NOD4; NOD27; CLR16.1; NLRC5

Contact

☎ | 400-999-6126

✉ | cn.market@abclonal.com.cn

🌐 | www.abclonal.com.cn

Product Information

Source

Rabbit

Isotype

IgG

Purification

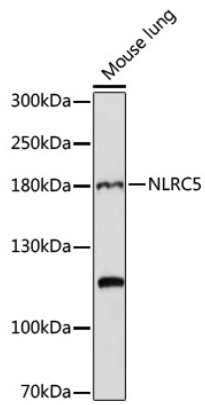
Affinity purification

Storage

Store at -20°C. Avoid freeze / thaw cycles.

Buffer: PBS with 0.09% Sodium azide,50% glycerol,pH7.3.

Validation Data



Western blot analysis of lysates from mouse lung, using NLRC5 Rabbit pAb (A16710) at 1:1000 dilution.
Secondary antibody: HRP-conjugated Goat anti-Rabbit IgG (H+L) (AS014) at 1:10000 dilution.
Lysates/proteins: 25 μ g per lane.
Blocking buffer: 3% nonfat dry milk in TBST.
Detection: ECL Basic Kit (RM00020).
Exposure time: 5min.