

EMC10 Rabbit pAb

Catalog No.: A16712

Basic Information

Observed MW

27kDa

Calculated MW

27kDa

Category

Primary antibody

Applications

WB

Cross-Reactivity

Human, Mouse, Rat

Background

Contributes to membrane insertase activity. Involved in positive regulation of angiogenesis; positive regulation of endothelial cell proliferation; and protein insertion into ER membrane. Located in extracellular region. Is integral component of endoplasmic reticulum membrane. Part of EMC complex.

Recommended Dilutions

WB 1:500 - 1:2000

Immunogen Information

Gene ID

284361

Swiss Prot

Q5UCC4

Immunogen

A synthetic peptide of human EMC10 .

Synonyms

HSM1; HSS1; NEDDFAS; C19orf63; EMC10

Contact

☎ | 400-999-6126

✉ | cn.market@abclonal.com.cn

🌐 | www.abclonal.com.cn

Product Information

Source

Rabbit

Isotype

IgG

Purification

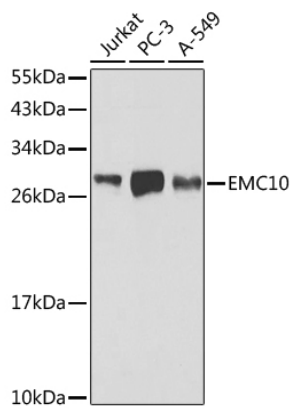
Affinity purification

Storage

Store at -20°C. Avoid freeze / thaw cycles.

Buffer: PBS with 0.02% sodium azide, 50% glycerol, pH7.3.

Validation Data



Western blot analysis of extracts of various cell lines, using EMC10 antibody (A16712).
Secondary antibody: HRP Goat Anti-Rabbit IgG (H+L) (AS014) at 1:10000 dilution.
Lysates/proteins: 25µg per lane.
Blocking buffer: 3% nonfat dry milk in TBST.