

IQSEC1 Rabbit pAb

Catalog No.: A16725

Basic Information

Observed MW

108kDa

Calculated MW

108kDa

Category

Primary antibody

Applications

ELISA, WB

Cross-Reactivity

Mouse, Rat

Background

Predicted to enable protein kinase binding activity. Predicted to be involved in several processes, including positive regulation of focal adhesion disassembly; positive regulation of keratinocyte migration; and regulation of postsynaptic neurotransmitter receptor internalization. Located in nucleolus. Implicated in intellectual developmental disorder with short stature and behavioral abnormalities.

Recommended Dilutions

WB 1:500 - 1:1000

Immunogen Information

Gene ID

9922

Swiss Prot

Q6DN90

Immunogen

Recombinant fusion protein containing a sequence corresponding to amino acids 180-380 of human IQSEC1 (NP_055684.3).

Synonyms

BRAG2; GEP100; IDDSSBA; ARFGEP100; ARF-GEP100; IQSEC1

Contact

☎ | 400-999-6126

✉ | cn.market@abclonal.com.cn

🌐 | www.abclonal.com.cn

Product Information

Source

Rabbit

Isotype

IgG

Purification

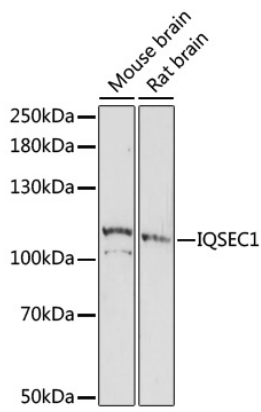
Affinity purification

Storage

Store at -20°C. Avoid freeze / thaw cycles.

Buffer: PBS with 0.01% thimerosal, 50% glycerol, pH7.3.

Validation Data



Western blot analysis of various lysates using IQSEC1 Rabbit pAb (A16725) at 1:1000 dilution.
Secondary antibody: HRP Goat Anti-Rabbit IgG (H+L) (AS014) at 1:10000 dilution.
Lysates/proteins: 25µg per lane.
Blocking buffer: 3% nonfat dry milk in TBST.
Detection: ECL Enhanced Kit (RM00021).
Exposure time: 5min.