

MAPK1/MAPK3 Rabbit pAb

Catalog No.: A16736

Basic Information

Observed MW

41kDa/43kDa

Calculated MW

36kDa/38kDa/40kDa/41kDa/43kDa

Category

Primary antibody

Applications

ELISA,WB,IF/ICC

Cross-Reactivity

Human, Mouse, Rat

Background

MAP kinases, also known as extracellular signal-regulated kinases (ERKs), act as an integration point for multiple biochemical signals, and are involved in a wide variety of cellular processes such as proliferation, differentiation, transcription regulation and development. The activation of this kinase requires its phosphorylation by upstream kinases. Upon activation, this kinase translocates to the nucleus of the stimulated cells, where it phosphorylates nuclear targets.

Recommended Dilutions

WB	1:1000 - 1:2000
IF/ICC	1:100 - 1:200

Immunogen Information

Gene ID

5594/5595

Swiss Prot

P28482/P27361

Immunogen

A synthetic peptide corresponding to a sequence within amino acids 200-300 of human MAPK1/MAPK3 (NP_620407.1/NP_002737.2).

Synonyms

Contact

☎ | 400-999-6126

✉ | cn.market@abclonal.com.cn

🌐 | www.abclonal.com.cn

Product Information

Source

Rabbit

Isotype

IgG

Purification

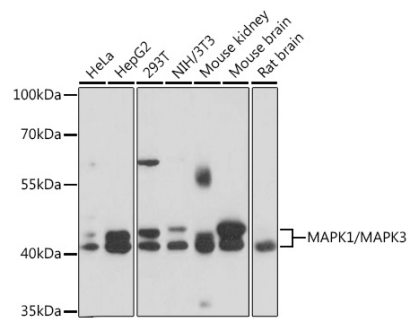
Affinity purification

Storage

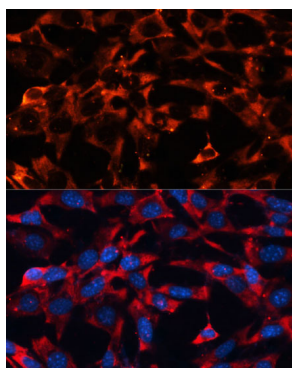
Store at -20°C. Avoid freeze / thaw cycles.

Buffer: PBS with 0.01% thimerosal, 50% glycerol, pH7.3.

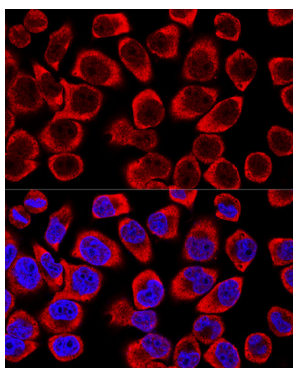
Validation Data



Western blot analysis of various lysates using MAPK1/MAPK3 Rabbit pAb (A16736) at 1:1000 dilution. Secondary antibody: HRP Goat Anti-Rabbit IgG (H+L) (AS014) at 1:10000 dilution. Lysates/proteins: 25µg per lane. Blocking buffer: 3% nonfat dry milk in TBST. Detection: ECL Basic Kit (RM00020). Exposure time: 10s.



Immunofluorescence analysis of NIH-3T3 cells using MAPK1/MAPK3 Rabbit pAb (A16736) at dilution of 1:100 (40x lens). Secondary antibody: Cy3 Goat Anti-Rabbit IgG (H+L) (AS007) at 1:500 dilution. Blue: DAPI for nuclear staining.



Confocal immunofluorescence analysis of HeLa cells using MAPK1/MAPK3 Rabbit pAb (A16736) at dilution of 1:200. Blue: DAPI for nuclear staining.