

Gsdmc3 Rabbit pAb

Catalog No.: A16741 **3 Publications**

Basic Information

Observed MW

54kDa

Calculated MW

54kDa

Category

Primary antibody

Applications

ELISA, WB

Cross-Reactivity

Mouse

Background

Predicted to enable phosphatidylinositol-4,5-bisphosphate binding activity; phosphatidylinositol-4-phosphate binding activity; and phosphatidylserine binding activity. Predicted to be involved in defense response to bacterium and pyroptosis. Predicted to act upstream of or within programmed cell death. Predicted to be located in cytoplasm. Is expressed in gut and metanephros. Orthologous to human GSDMC (gasdermin C).

Recommended Dilutions

WB 1:1000 - 1:5000

Immunogen Information

Gene ID

270328

Swiss Prot

Q8CB12

Immunogen

Recombinant fusion protein containing a sequence corresponding to amino acids 2-80 of mouse Gsdmc3 (NP_899017.2).

Synonyms

9930109F21Rik; Gsdmc3

Contact

☎ | 400-999-6126

✉ | cn.market@abclonal.com.cn

🌐 | www.abclonal.com.cn

Product Information

Source

Rabbit

Isotype

IgG

Purification

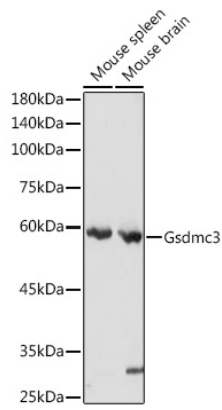
Affinity purification

Storage

Store at -20°C. Avoid freeze / thaw cycles.

Buffer: PBS with 0.01% thimerosal, 50% glycerol, pH7.3.

Validation Data



Western blot analysis of various lysates using Gsdmc3 Rabbit pAb (A16741) at 1:3000 dilution.
Secondary antibody: HRP Goat Anti-Rabbit IgG (H+L) (AS014) at 1:10000 dilution.
Lysates/proteins: 25 μ g per lane.
Blocking buffer: 3% nonfat dry milk in TBST.
Detection: ECL Basic Kit (RM00020).
Exposure time: 10s.