

TRIM72 Rabbit pAb

Catalog No.: A16751

Basic Information

Observed MW

53kDa

Calculated MW

53kDa

Category

Primary antibody

Applications

ELISA, WB

Cross-Reactivity

Human, Mouse

Background

Enables identical protein binding activity. Predicted to be involved in several processes, including cellular protein metabolic process; plasma membrane repair; and protein homooligomerization. Predicted to act upstream of or within negative regulation of insulin receptor signaling pathway; negative regulation of insulin-like growth factor receptor signaling pathway; and negative regulation of myotube differentiation. Predicted to be located in cytoplasmic vesicle membrane. Predicted to be active in cytoplasm and sarcolemma.

Recommended Dilutions

WB 1:500 - 1:1000

Immunogen Information

Gene ID

434246

Swiss Prot

Q1XH17

Immunogen

A synthetic peptide corresponding to a sequence within amino acids 200-300 of mouse TRIM72 (NP_001073401.1).

Synonyms

MG53; TRIM72

Contact

 | 400-999-6126

 | cn.market@abclonal.com.cn

 | www.abclonal.com.cn

Product Information

Source

Rabbit

Isotype

IgG

Purification

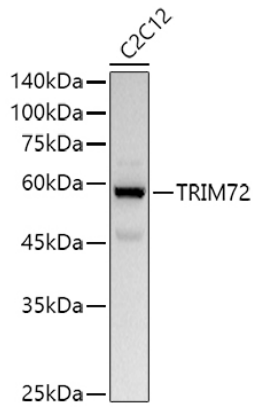
Affinity purification

Storage

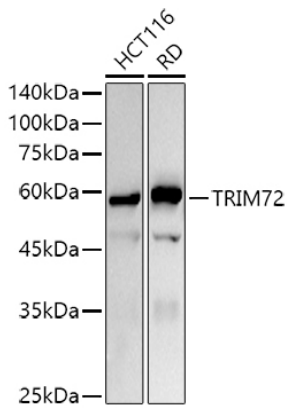
Store at -20°C. Avoid freeze / thaw cycles.

Buffer: PBS with 0.02% sodium azide, 50% glycerol, pH 7.3.

Validation Data



Western blot analysis of lysates from C2C12 cells, using TRIM72 Rabbit pAb (A16751) at 1:1000 dilution.
Secondary antibody: HRP Goat Anti-Rabbit IgG (H+L) (AS014) at 1:10000 dilution.
Lysates/proteins: 25µg per lane.
Blocking buffer: 3% nonfat dry milk in TBST.
Detection: ECL Basic Kit (RM00020).
Exposure time: 30s.



Western blot analysis of various lysates using TRIM72 Rabbit pAb (A16751) at 1:1000 dilution.
Secondary antibody: HRP Goat Anti-Rabbit IgG (H+L) (AS014) at 1:10000 dilution.
Lysates/proteins: 25µg per lane.
Blocking buffer: 3% nonfat dry milk in TBST.
Detection: ECL Basic Kit (RM00020).
Exposure time: 180s.