

# ARSB Rabbit pAb

Catalog No.: A16765

## Basic Information

### Observed MW

Refer to figures

### Calculated MW

60kDa

### Category

Primary antibody

### Applications

ELISA, IHC-P

### Cross-Reactivity

Human, Mouse

## Background

Arylsulfatase B encoded by this gene belongs to the sulfatase family. The arylsulfatase B homodimer hydrolyzes sulfate groups of N-Acetyl-D-galactosamine, chondroitin sulfate, and dermatan sulfate. The protein is targeted to the lysosome. Mucopolysaccharidosis type VI is an autosomal recessive lysosomal storage disorder resulting from a deficiency of arylsulfatase B. Two alternatively spliced transcript variants encoding distinct isoforms have been found for this gene.

## Recommended Dilutions

IHC-P 1:50 - 1:200

## Immunogen Information

### Gene ID

411

### Swiss Prot

P15848

### Immunogen

Recombinant fusion protein containing a sequence corresponding to amino acids 404-533 of human ARSB (NP\_000037.2).

### Synonyms

ASB; G4S; MPS6; ARSB

## Contact

☎ | 400-999-6126

✉ | [cn.market@abclonal.com.cn](mailto:cn.market@abclonal.com.cn)

🌐 | [www.abclonal.com.cn](http://www.abclonal.com.cn)

## Product Information

### Source

Rabbit

### Isotype

IgG

### Purification

Affinity purification

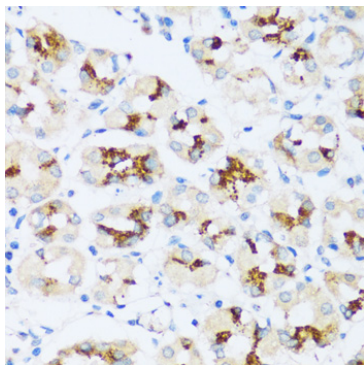
### Storage

Store at -20°C. Avoid freeze / thaw cycles.

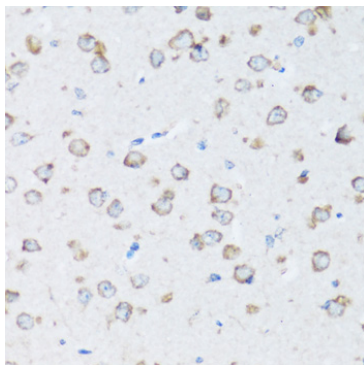
Buffer: PBS with 0.01% thimerosal, 50% glycerol, pH 7.3.

## Validation Data

---



Immunohistochemistry analysis of ARSB in paraffin-embedded human stomach using ARSB Rabbit pAb (A16765) at dilution of 1:100 (40x lens). Perform microwave antigen retrieval with 10 mM PBS buffer pH 7.2 before commencing with IHC staining protocol.



Immunohistochemistry analysis of ARSB in paraffin-embedded mouse brain using ARSB Rabbit pAb (A16765) at dilution of 1:100 (40x lens). Perform microwave antigen retrieval with 10 mM PBS buffer pH 7.2 before commencing with IHC staining protocol.