

# ASGR1 Rabbit pAb

**Catalog No.: A16766**

## Basic Information

### Observed MW

Refer to figures

### Calculated MW

33kDa

### Category

Primary antibody

### Applications

ELISA, IHC-P

### Cross-Reactivity

Human, Mouse, Rat

## Background

This gene encodes a subunit of the asialoglycoprotein receptor. This receptor is a transmembrane protein that plays a critical role in serum glycoprotein homeostasis by mediating the endocytosis and lysosomal degradation of glycoproteins with exposed terminal galactose or N-acetylgalactosamine residues. The asialoglycoprotein receptor may facilitate hepatic infection by multiple viruses including hepatitis B, and is also a target for liver-specific drug delivery. The asialoglycoprotein receptor is a hetero-oligomeric protein composed of major and minor subunits, which are encoded by different genes. The protein encoded by this gene is the more abundant major subunit. Alternatively spliced transcript variants encoding multiple isoforms have been observed for this gene.

## Recommended Dilutions

IHC-P 1:50 - 1:200

## Immunogen Information

### Gene ID

432

### Swiss Prot

P07306

### Immunogen

Recombinant fusion protein containing a sequence corresponding to amino acids 62-291 of human ASGR1 (NP\_001125.1).

### Synonyms

HL-1; ASGPR; ASGPR1; CLEC4H1; ASGR1

## Contact

☎ | 400-999-6126

✉ | [cn.market@abclonal.com.cn](mailto:cn.market@abclonal.com.cn)

🌐 | [www.abclonal.com.cn](http://www.abclonal.com.cn)

## Product Information

### Source

Rabbit

### Isotype

IgG

### Purification

Affinity purification

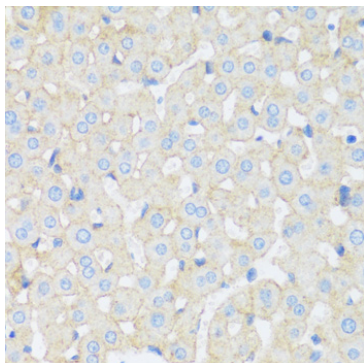
### Storage

Store at -20°C. Avoid freeze / thaw cycles.

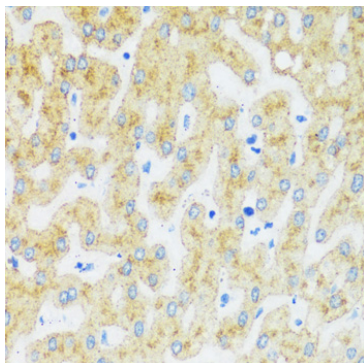
Buffer: PBS with 0.01% thimerosal, 50% glycerol, pH7.3.

## Validation Data

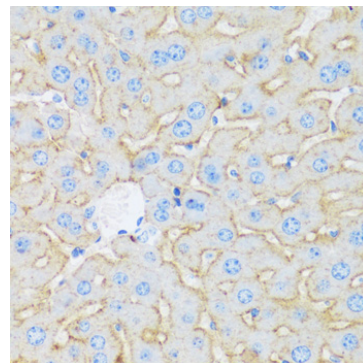
---



Immunohistochemistry analysis of ASGR1 in paraffin-embedded rat liver using ASGR1 Rabbit pAb (A16766) at dilution of 1:100 (40x lens). Perform microwave antigen retrieval with 10 mM PBS buffer pH 7.2 before commencing with IHC staining protocol.



Immunohistochemistry analysis of ASGR1 in paraffin-embedded human liver using ASGR1 Rabbit pAb (A16766) at dilution of 1:100 (40x lens). Perform microwave antigen retrieval with 10 mM PBS buffer pH 7.2 before commencing with IHC staining protocol.



Immunohistochemistry analysis of ASGR1 in paraffin-embedded mouse liver using ASGR1 Rabbit pAb (A16766) at dilution of 1:100 (40x lens). Perform microwave antigen retrieval with 10 mM PBS buffer pH 7.2 before commencing with IHC staining protocol.