

CALCA Rabbit pAb

Catalog No.: A16786

Basic Information

Observed MW

Refer to figures

Calculated MW

14kDa

Category

Primary antibody

Applications

ELISA, IHC-P

Cross-Reactivity

Mouse

Background

This gene encodes the peptide hormones calcitonin, calcitonin gene-related peptide and katacalcin by tissue-specific alternative RNA splicing of the gene transcripts and cleavage of inactive precursor proteins. Calcitonin is involved in calcium regulation and acts to regulate phosphorus metabolism. Calcitonin gene-related peptide functions as a vasodilator and as an antimicrobial peptide while katacalcin is a calcium-lowering peptide. Multiple transcript variants encoding different isoforms have been found for this gene.

Recommended Dilutions

IHC-P 1:50 - 1:200

Immunogen Information

Gene ID

796

Swiss Prot

P06881

Immunogen

Recombinant fusion protein containing a sequence corresponding to amino acids 26-128 of CALCA (NP_001029125.1).

Synonyms

CT; KC; PCT; CGRP; CALC1; CGRP1; CGRP-I; CGRP-alpha; CALCA

Contact

☎ | 400-999-6126

✉ | cn.market@abclonal.com.cn

🌐 | www.abclonal.com.cn

Product Information

Source

Rabbit

Isotype

IgG

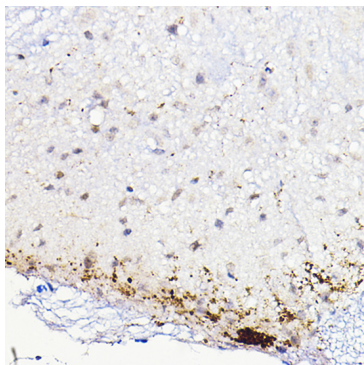
Purification

Affinity purification

Storage

Store at -20°C. Avoid freeze / thaw cycles.

Buffer: PBS with 0.01% thimerosal, 50% glycerol, pH 7.3.



Immunohistochemistry analysis of paraffin-embedded mouse spinal cord using CALCA Rabbit pAb (A16786) at dilution of 1:100 (40x lens). Perform high pressure antigen retrieval with 10 mM citrate buffer pH 6.0 before commencing with IHC staining protocol.