

CAST Rabbit pAb

Catalog No.: A16790

Basic Information

Observed MW

Refer to figures

Calculated MW

77kDa

Category

Primary antibody

Applications

ELISA, IHC-P

Cross-Reactivity

Human, Mouse

Background

The protein encoded by this gene is an endogenous calpain (calcium-dependent cysteine protease) inhibitor. It consists of an N-terminal domain L and four repetitive calpain-inhibition domains (domains 1-4), and it is involved in the proteolysis of amyloid precursor protein. The calpain/calpastatin system is involved in numerous membrane fusion events, such as neural vesicle exocytosis and platelet and red-cell aggregation. The encoded protein is also thought to affect the expression levels of genes encoding structural or regulatory proteins. Alternatively spliced transcript variants encoding different isoforms have been described.

Recommended Dilutions

IHC-P 1:50 - 1:200

Immunogen Information

Gene ID

831

Swiss Prot

P20810

Immunogen

Recombinant fusion protein containing a sequence corresponding to amino acids 406-695 of human CAST (NP_001177371.1).

Synonyms

BS-17; PLACK; CAST

Contact

☎ | 400-999-6126

✉ | cn.market@abclonal.com.cn

🌐 | www.abclonal.com.cn

Product Information

Source

Rabbit

Isotype

IgG

Purification

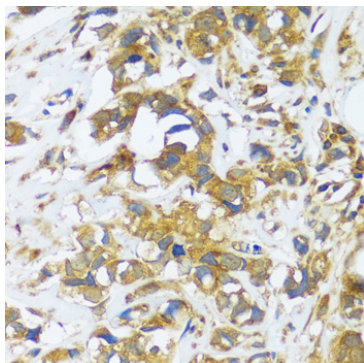
Affinity purification

Storage

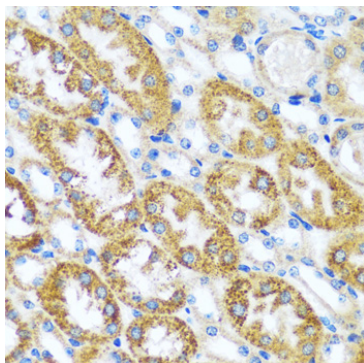
Store at -20°C. Avoid freeze / thaw cycles.

Buffer: PBS with 0.01% thimerosal, 50% glycerol, pH7.3.

Validation Data



Immunohistochemistry analysis of CAST in paraffin-embedded human breast cancer using CAST Rabbit pAb (A16790) at dilution of 1:100 (40x lens). Perform microwave antigen retrieval with 10 mM PBS buffer pH 7.2 before commencing with IHC staining protocol.



Immunohistochemistry analysis of CAST in paraffin-embedded mouse kidney using CAST Rabbit pAb (A16790) at dilution of 1:100 (40x lens). Perform microwave antigen retrieval with 10 mM PBS buffer pH 7.2 before commencing with IHC staining protocol.