

[KO Validated] Cyclin B1 Rabbit pAb

Catalog No.: A16800 **KO Validated** **1 Publications**

Basic Information

Observed MW

55kDa

Calculated MW

48kDa

Category

Primary antibody

Applications

ELISA, WB, IHC-P, IF/ICC

Cross-Reactivity

Human, Mouse, Rat

Background

The protein encoded by this gene is a regulatory protein involved in mitosis. The gene product complexes with p34(cdc2) to form the maturation-promoting factor (MPF). The encoded protein is necessary for proper control of the G2/M transition phase of the cell cycle.

Recommended Dilutions

WB	1:500 - 1:1000
IHC-P	1:50 - 1:200
IF/ICC	1:50 - 1:200

Immunogen Information

Gene ID

891

Swiss Prot

P14635

Immunogen

A synthetic peptide corresponding to a sequence within amino acids 350-433 of human CCNB1 (NP_114172.1).

Synonyms

CCNB; B1

Contact

☎ | 400-999-6126

✉ | cn.market@abclonal.com.cn

🌐 | www.abclonal.com.cn

Product Information

Source

Rabbit

Isotype

IgG

Purification

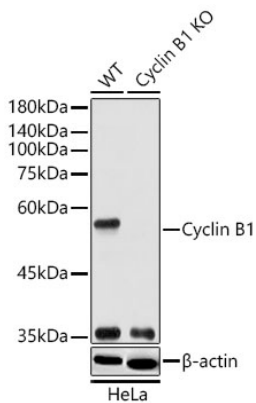
Affinity purification

Storage

Store at -20°C. Avoid freeze / thaw cycles.

Buffer: PBS with 0.01% thimerosal, 50% glycerol, pH7.3.

Validation Data



Western blot analysis of lysates from wild type (WT) and Cyclin B1 knockout (KO) HeLa cells using [KO Validated] Cyclin B1 Rabbit pAb (A16800) at 1:1000 dilution.

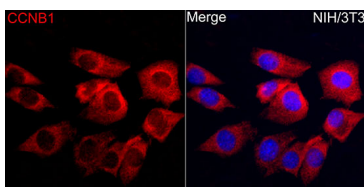
Secondary antibody: HRP Goat Anti-Rabbit IgG (H+L) (AS014) at 1:10000 dilution.

Lysates/proteins: 25 µg per lane.

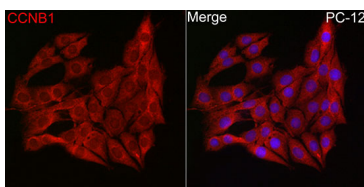
Blocking buffer: 3% nonfat dry milk in TBST.

Detection: ECL Basic Kit (RM00020).

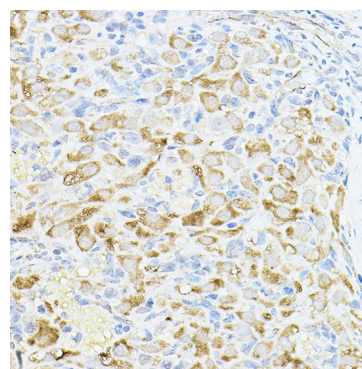
Exposure time: 60s.



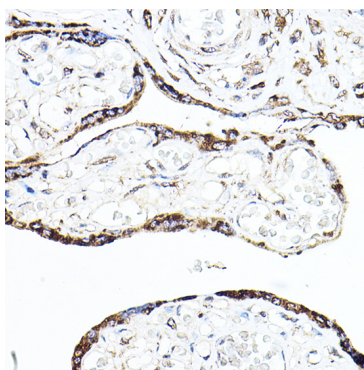
Immunofluorescence analysis of NIH/3T3 cells using [KO Validated] Cyclin B1 Rabbit pAb (A16800) at dilution of 1:100 (40x lens). Secondary antibody: Cy3 Goat Anti-Rabbit IgG (H+L) (AS007) at 1:500 dilution. Blue: DAPI for nuclear staining.



Immunofluorescence analysis of PC-12 cells using [KO Validated] Cyclin B1 Rabbit pAb (A16800) at dilution of 1:100 (40x lens). Secondary antibody: Cy3 Goat Anti-Rabbit IgG (H+L) (AS007) at 1:500 dilution. Blue: DAPI for nuclear staining.



Immunohistochemistry analysis of Cyclin B1 in paraffin-embedded rat ovary tissue using [KO Validated] Cyclin B1 Rabbit pAb (A16800) at a dilution of 1:150 (40x lens). High pressure antigen retrieval was performed with 0.01 M citrate buffer (pH 6.0) prior to IHC staining.



Immunohistochemistry analysis of Cyclin B1 in paraffin-embedded human placenta tissue using [KO Validated] Cyclin B1 Rabbit pAb (A16800) at a dilution of 1:150 (40x lens). High pressure antigen retrieval was performed with 0.01 M citrate buffer (pH 6.0) prior to IHC staining.