

[KO Validated] DNA Polymerase beta Rabbit pAb

Catalog No.: A1681 **KO** **Validated** **4 Publications**

Basic Information

Observed MW

37kDa

Calculated MW

38kDa

Category

Primary antibody

Applications

WB, IHC-P, IF/ICC, ELISA

Cross-Reactivity

Human, Mouse

Background

The protein encoded by this gene is a DNA polymerase involved in base excision and repair, also called gap-filling DNA synthesis. The encoded protein, acting as a monomer, is normally found in the cytoplasm, but it translocates to the nucleus upon DNA damage. Several transcript variants of this gene exist, but the full-length nature of only one has been described to date.

Recommended Dilutions

WB 1:200 - 1:1000**IHC-P** 1:50 - 1:200**IF/ICC** 1:20 - 1:200

ELISA Recommended starting concentration is 1 µg/mL. Please optimize the concentration based on your specific assay requirements.

Immunogen Information

Gene ID

5423

Swiss Prot

P06746

Immunogen

Recombinant fusion protein containing a sequence corresponding to amino acids 1-335 of human DNA Polymerase beta (NP_002681.1).

Synonyms

POLB; ta

Contact

 | 400-999-6126 | cn.market@abclonal.com.cn | www.abclonal.com.cn

Product Information

Source

Rabbit

Isotype

IgG

Purification

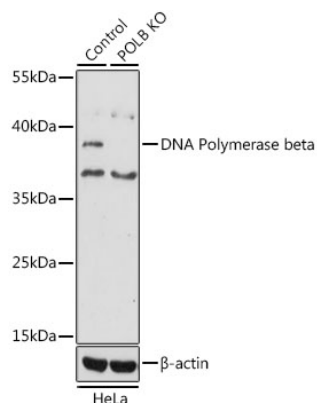
Affinity purification

Storage

Store at -20°C. Avoid freeze / thaw cycles.

Buffer: PBS with 0.02% sodium azide, 50% glycerol, pH 7.3.

Validation Data



Western blot analysis of lysates from wild type (WT) and DNA Polymerase beta knockout (KO) HeLa cells, using [KO Validated] DNA Polymerase beta Rabbit pAb (A1681) at 1:1000 dilution.

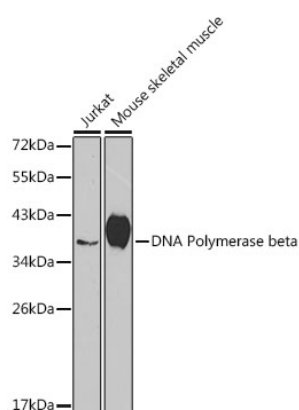
Secondary antibody: HRP-conjugated Goat anti-Rabbit IgG (H+L) (AS014) at 1:10000 dilution.

Lysates/proteins: 25µg per lane.

Blocking buffer: 3% nonfat dry milk in TBST.

Detection: ECL Basic Kit (RM00020).

Exposure time: 30s.

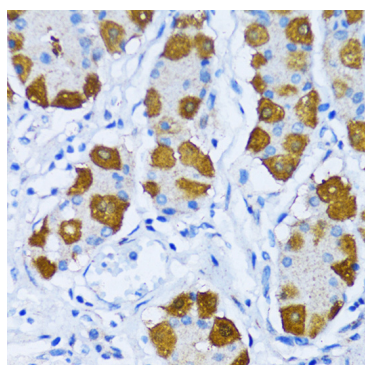


Western blot analysis of various lysates using [KO Validated] DNA Polymerase beta Rabbit pAb (A1681) at 1:1000 dilution.

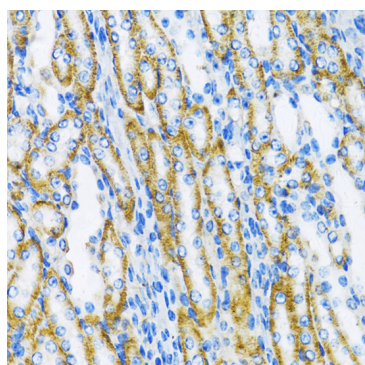
Secondary antibody: HRP-conjugated Goat anti-Rabbit IgG (H+L) (AS014) at 1:10000 dilution.

Lysates/proteins: 25µg per lane.

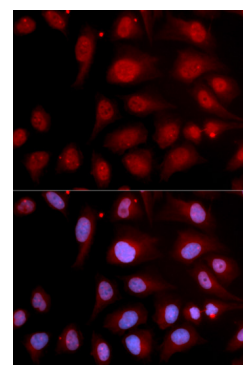
Blocking buffer: 3% nonfat dry milk in TBST.



Immunohistochemistry analysis of paraffin-embedded Human stomach using [KO Validated] DNA Polymerase beta Rabbit pAb (A1681) at dilution of 1:100 (40x lens). Microwave antigen retrieval performed with 0.01M PBS Buffer (pH 7.2) prior to IHC staining.



Immunohistochemistry analysis of paraffin-embedded Mouse kidney using [KO Validated] DNA Polymerase beta Rabbit pAb (A1681) at dilution of 1:100 (40x lens). Microwave antigen retrieval performed with 0.01M PBS Buffer (pH 7.2) prior to IHC staining.



Immunofluorescence analysis of U2OS cells using [KO Validated] DNA Polymerase beta Rabbit pAb (A1681). Secondary antibody: Cy3-conjugated Goat anti-Rabbit IgG (H+L) (AS007) at 1:500 dilution. Blue: DAPI for nuclear staining.