

# CD52 Rabbit pAb

Catalog No.: A16815

## Basic Information

### Observed MW

29kDa

### Calculated MW

7kDa

### Category

Primary antibody

### Applications

ELISA, WB, IHC-P

### Cross-Reactivity

Human, Mouse

## Background

Involved in positive regulation of cytosolic calcium ion concentration. Predicted to be located in extracellular region and plasma membrane. Predicted to be intrinsic component of plasma membrane. Predicted to be active in sperm midpiece.

## Recommended Dilutions

**WB** 1:500 - 1:2000

**IHC-P** 1:50 - 1:100

## Immunogen Information

### Gene ID

1043

### Swiss Prot

P31358

### Immunogen

A synthetic peptide corresponding to a sequence within amino acids 1-61 of human CD52 (NP\_001794.2).

### Synonyms

HE5; CDW52; EDDM5; CD52

## Contact

 | 400-999-6126

 | [cn.market@abclonal.com.cn](mailto:cn.market@abclonal.com.cn)

 | [www.abclonal.com.cn](http://www.abclonal.com.cn)

## Product Information

### Source

Rabbit

### Isotype

IgG

### Purification

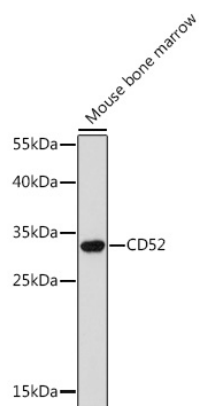
Affinity purification

### Storage

Store at -20°C. Avoid freeze / thaw cycles.

Buffer: PBS with 0.05% proclin300, 50% glycerol, pH7.3.

## Validation Data



Western blot analysis of lysates from Mouse bone marrow, using CD52 Rabbit pAb (A16815) at 1:300 dilution.

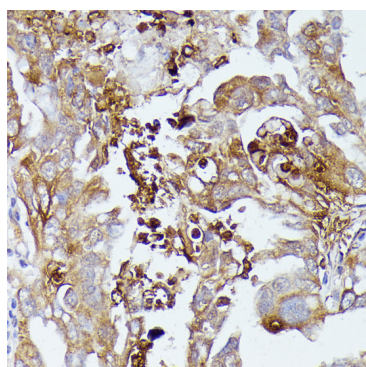
Secondary antibody: HRP Goat Anti-Rabbit IgG (H+L) (AS014) at 1:10000 dilution.

Lysates/proteins: 25µg per lane.

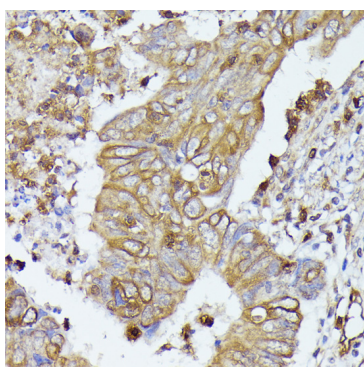
Blocking buffer: 3% nonfat dry milk in TBST.

Detection: ECL Enhanced Kit (RM00021).

Exposure time: 90s.



Immunohistochemistry analysis of paraffin-embedded human lung cancer using CD52 Rabbit pAb (A16815) at dilution of 1:100 (40x lens). Perform microwave antigen retrieval with 10 mM PBS buffer pH 7.2 before commencing with IHC staining protocol.



Immunohistochemistry analysis of paraffin-embedded human colon carcinoma using CD52 Rabbit pAb (A16815) at dilution of 1:100 (40x lens). Perform microwave antigen retrieval with 10 mM PBS buffer pH 7.2 before commencing with IHC staining protocol.