

# GLI2 Rabbit pAb

Catalog No.: A16864 **4 Publications**

## Basic Information

**Observed MW**

170kDa

**Calculated MW**

165kDa

**Category**

Primary antibody

**Applications**

ELISA, WB, IHC-P, IF/ICC

**Cross-Reactivity**

Human, Mouse, Rat

## Background

Enables DNA-binding transcription activator activity, RNA polymerase II-specific; RNA polymerase II cis-regulatory region sequence-specific DNA binding activity; and promoter-specific chromatin binding activity. Acts upstream of or within several processes, including animal organ development; chordate embryonic development; and regulation of smoothened signaling pathway. Located in several cellular components, including axoneme; ciliary tip; and nuclear speck. Is expressed in several structures, including central nervous system; embryo mesenchyme; eye; genitourinary system; and jaw. Human ortholog(s) of this gene implicated in Culler-Jones syndrome; holoprosencephaly 9; and spina bifida. Orthologous to human GLI2 (GLI family zinc finger 2).

## Recommended Dilutions

<b>WB</b>	1:500 - 1:2000
<b>IHC-P</b>	1:50 - 1:100
<b>IF/ICC</b>	1:50 - 1:100

## Immunogen Information

**Gene ID**

14633

**Swiss Prot**

Q0VGT2

**Immunogen**

Recombinant protein of mouse GLI2.

**Synonyms**

GLI2; CJS; HPE9; PHS2; THP1; THP2; Gli2

## Contact

	400-999-6126
	<a href="mailto:cn.market@abclonal.com.cn">cn.market@abclonal.com.cn</a>
	<a href="http://www.abclonal.com.cn">www.abclonal.com.cn</a>

## Product Information

**Source**

Rabbit

**Isotype**

IgG

**Purification**

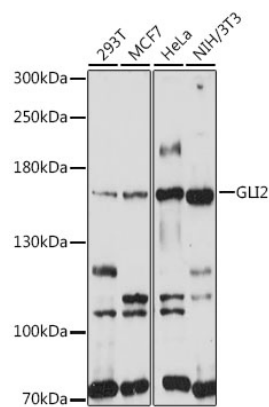
Affinity purification

**Storage**

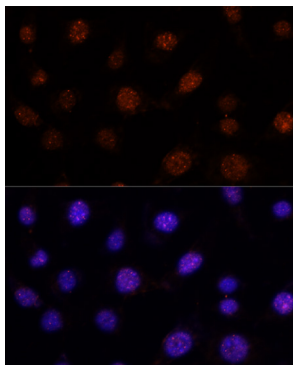
Store at -20°C. Avoid freeze / thaw cycles.

Buffer: PBS with 0.01% thimerosal, 50% glycerol, pH7.3.

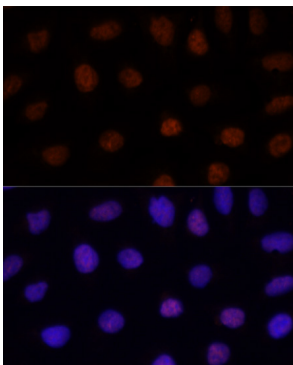
Validation Data



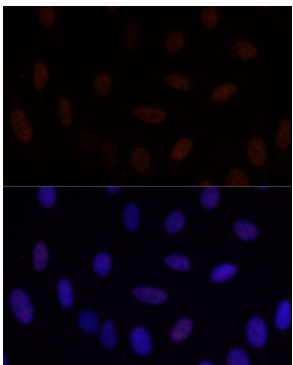
Western blot analysis of various lysates using GLI2 Rabbit pAb (A16864) at 1:1000 dilution.  
Secondary antibody: HRP Goat Anti-Rabbit IgG (H+L) (AS014) at 1:10000 dilution.  
Lysates/proteins: 25µg per lane.  
Blocking buffer: 3% nonfat dry milk in TBST.  
Detection: ECL Basic Kit (RM00020).  
Exposure time: 30s.



Immunofluorescence analysis of L-929 cells using GLI2 Rabbit pAb (A16864) at dilution of 1:100. Secondary antibody: Cy3 Goat Anti-Rabbit IgG (H+L) (AS007) at 1:500 dilution. Blue: DAPI for nuclear staining.



Immunofluorescence analysis of U-2 OS cells using GLI2 Rabbit pAb (A16864) at dilution of 1:100. Secondary antibody: Cy3 Goat Anti-Rabbit IgG (H+L) (AS007) at 1:500 dilution. Blue: DAPI for nuclear staining.



Immunofluorescence analysis of U-2 OS cells using GLI2 Rabbit pAb (A16864) at dilution of 1:100. Secondary antibody: Cy3 Goat Anti-Rabbit IgG (H+L) (AS007) at 1:500 dilution. Blue: DAPI for nuclear staining.