

# IFNA21 Rabbit pAb

Catalog No.: A16881

## Basic Information

### Observed MW

22kDa

### Calculated MW

22kDa

### Category

Primary antibody

### Applications

ELISA, WB

### Cross-Reactivity

Mouse

## Background

This gene is a member of the alpha interferon gene cluster on the short arm of chromosome 9. Interferons are cytokines produced in response to viral infection that mediate the immune response and interfere with viral replication. The encoded protein is a type I interferon and may play a specific role in the antiviral response to rubella virus.

## Recommended Dilutions

WB 1:500 - 1:2000

## Immunogen Information

### Gene ID

3452

### Swiss Prot

P01568

### Immunogen

A synthetic peptide corresponding to a sequence within amino acids 100 to the C-terminus of human IFNA21 (NP\_002166.2).

### Synonyms

lIF F; lIF-F; IFN-alpha; IFNA21

## Contact

 | 400-999-6126

 | [cn.market@abclonal.com.cn](mailto:cn.market@abclonal.com.cn)

 | [www.abclonal.com.cn](http://www.abclonal.com.cn)

## Product Information

### Source

Rabbit

### Isotype

IgG

### Purification

Affinity purification

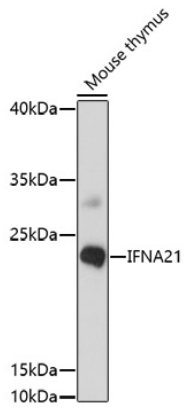
### Storage

Store at -20°C. Avoid freeze / thaw cycles.

Buffer: PBS with 0.01% thimerosal, 50% glycerol, pH7.3.

## Validation Data

---



Western blot analysis of lysates from mouse thymus, using IFNA21 Rabbit pAb (A16881) at 1:1000 dilution.

Secondary antibody: HRP Goat Anti-Rabbit IgG (H+L) (AS014) at 1:10000 dilution.

Lysates/proteins: 25µg per lane.

Blocking buffer: 3% nonfat dry milk in TBST.

Detection: ECL Basic Kit (RM00020).

Exposure time: 90s.