

IRS1 Rabbit pAb

Catalog No.: A16902 **6 Publications**

Basic Information

Observed MW

180kDa

Calculated MW

132kDa

Category

Primary antibody

Applications

ELISA, WB, IHC-P, IF/ICC

Cross-Reactivity

Human, Mouse, Rat

Background

This gene encodes a protein which is phosphorylated by insulin receptor tyrosine kinase. Mutations in this gene are associated with type II diabetes and susceptibility to insulin resistance.

Recommended Dilutions

WB	1:500 - 1:1000
IHC-P	1:50 - 1:200
IF/ICC	1:50 - 1:100

Immunogen Information

Gene ID

3667

Swiss Prot

P35568

Immunogen

Recombinant fusion protein containing a sequence corresponding to amino acids 1043-1242 of human IRS1 (NP_005535.1).

Synonyms

HIRS-1; IRS1

Contact

		400-999-6126
		cn.market@abclonal.com.cn
		www.abclonal.com.cn

Product Information

Source

Rabbit

Isotype

IgG

Purification

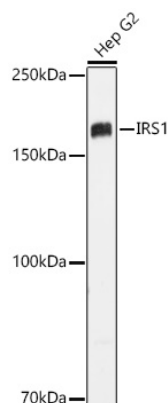
Affinity purification

Storage

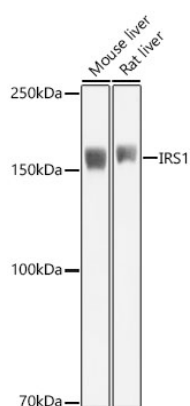
Store at -20°C. Avoid freeze / thaw cycles.

Buffer: PBS with 0.05% proclin300, 50% glycerol, pH7.3.

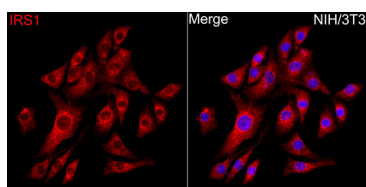
Validation Data



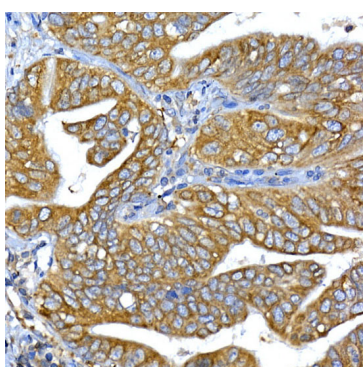
Western blot analysis of lysates from Hep G2 cells using IRS1 Rabbit pAb(A16902) at 1:1000 dilution.
Secondary antibody: HRP Goat Anti-Rabbit IgG (H+L) (AS014) at 1:10000 dilution.
Lysates/proteins: 25 µg per lane.
Blocking buffer: 3% nonfat dry milk in TBST.
Detection: ECL Basic Kit (RM00020).
Exposure time: 30s.



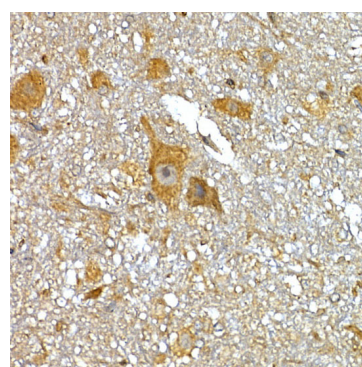
Western blot analysis of various lysates using IRS1 Rabbit pAb (A16902) at 1:1000 dilution.
Secondary antibody: HRP Goat Anti-Rabbit IgG (H+L) (AS014) at 1:10000 dilution.
Lysates / proteins: 25 µg per lane.
Blocking buffer: 3 % nonfat dry milk in TBST.
Detection: ECL Basic Kit (RM00020).
Exposure time: 1s.



Immunofluorescence analysis of NIH/3T3 cells using IRS1 Rabbit pAb (A16902) at dilution of 1:100 (40x lens). Secondary antibody: Cy3 Goat Anti-Rabbit IgG (H+L) (AS007) at 1:500 dilution. Blue: DAPI for nuclear staining.

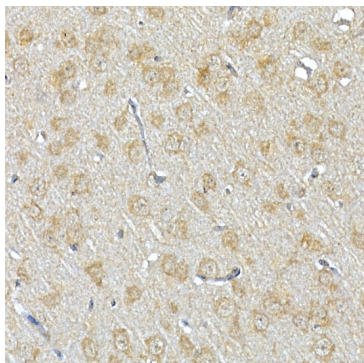


Immunohistochemistry analysis of IRS1 in paraffin-embedded human lung cancer tissue using IRS1 Rabbit pAb (A16902) at a dilution of 1:100 (40x lens). High pressure antigen retrieval was performed with 0.01 M citrate buffer (pH 6.0) prior to IHC staining.

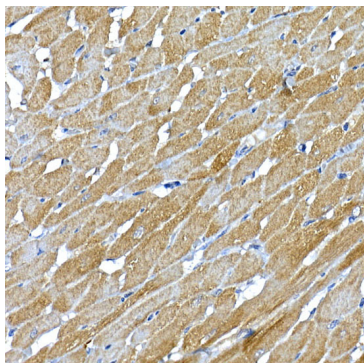


Immunohistochemistry analysis of IRS1 in paraffin-embedded mouse spinal cord tissue using IRS1 Rabbit pAb (A16902) at a dilution of 1:100 (40x lens). High pressure antigen retrieval was performed with 0.01 M citrate buffer (pH 6.0) prior to IHC staining.

Validation Data



Immunohistochemistry analysis of IRS1 in paraffin-embedded rat brain tissue using IRS1 Rabbit pAb (A16902) at a dilution of 1:100 (40x lens). High pressure antigen retrieval was performed with 0.01 M citrate buffer (pH 6.0) prior to IHC staining.



Immunohistochemistry analysis of IRS1 in paraffin-embedded rat heart tissue using IRS1 Rabbit pAb (A16902) at a dilution of 1:100 (40x lens). High pressure antigen retrieval was performed with 0.01 M citrate buffer (pH 6.0) prior to IHC staining.