

KPNA3 Rabbit pAb

Catalog No.: A16907

Basic Information

Observed MW

58kDa

Calculated MW

58kDa

Category

Primary antibody

Applications

ELISA, WB

Cross-Reactivity

Human

Background

The transport of molecules between the nucleus and the cytoplasm in eukaryotic cells is mediated by the nuclear pore complex (NPC), which consists of 60-100 proteins. Small molecules (up to 70 kD) can pass through the nuclear pore by nonselective diffusion while larger molecules are transported by an active process. The protein encoded by this gene belongs to the importin alpha family, and is involved in nuclear protein import.

Recommended Dilutions

WB 1:500 - 1:1000

Immunogen Information

Gene ID

3839

Swiss Prot

O00505

Immunogen

Recombinant fusion protein containing a sequence corresponding to amino acids 1-210 of human KPNA3 (NP_002258.2).

Synonyms

SRP1; SRP4; IPOA4; SPG88; hSRP1; SRP1gamma; KPNA3

Contact

☎ | 400-999-6126

✉ | cn.market@abclonal.com.cn

🌐 | www.abclonal.com.cn

Product Information

Source

Rabbit

Isotype

IgG

Purification

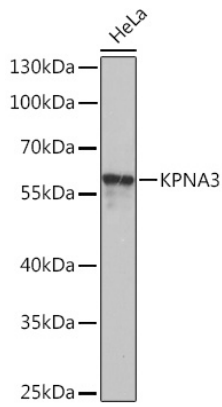
Affinity purification

Storage

Store at -20°C. Avoid freeze / thaw cycles.

Buffer: PBS with 0.02% sodium azide, 50% glycerol, pH7.3.

Validation Data



Western blot analysis of lysates from HeLa cells using KPNA3 Rabbit pAb (A16907) at 1:1000 dilution.
Secondary antibody: HRP Goat Anti-Rabbit IgG (H+L) (AS014) at 1:10000 dilution.
Lysates/proteins: 25 μ g per lane.
Blocking buffer: 3% nonfat dry milk in TBST.
Detection: ECL Basic Kit (RM00020).
Exposure time: 5s.