

Lamin B1 Rabbit pAb

Catalog No.: A16910 **2 Publications**

Basic Information

Observed MW

68kDa

Calculated MW

66kDa

Category

Primary antibody

Applications

ELISA, WB, IHC-P, IF/ICC, IP, ChIP

Cross-Reactivity

Human, Mouse, Rat

Background

This gene encodes one of the two B-type lamin proteins and is a component of the nuclear lamina. A duplication of this gene is associated with autosomal dominant adult-onset leukodystrophy (ADLD). Alternative splicing results in multiple transcript variants.

Recommended Dilutions

WB	1:500 - 1:2000
IHC-P	1:50 - 1:200
IF/ICC	1:50 - 1:200
IP	0.5µg-4µg antibody for 200µg-400µg extracts of whole cells
ChIP	5µg antibody for 5µg-10µg of Chromatin

Contact

☎	400-999-6126
✉	cn.market@abclonal.com.cn
🌐	www.abclonal.com.cn

Immunogen Information

Gene ID

4001

Swiss Prot

P20700

Immunogen

Recombinant fusion protein containing a sequence corresponding to amino acids 397-586 of human Lamin B1 (NP_005564.1).

Synonyms

LMN; ADLD; LMN2; LMNB; MCPH26; Lamin B1

Product Information

Source

Rabbit

Isotype

IgG

Purification

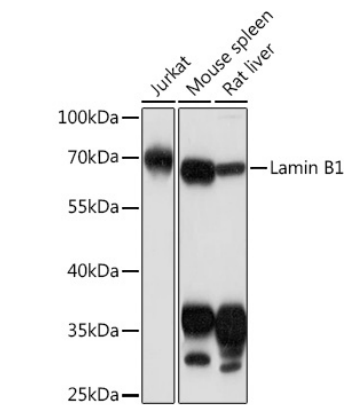
Affinity purification

Storage

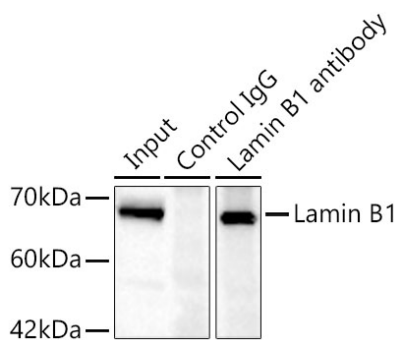
Store at -20°C. Avoid freeze / thaw cycles.

Buffer: PBS with 0.01% thimerosal, 50% glycerol, pH7.3.

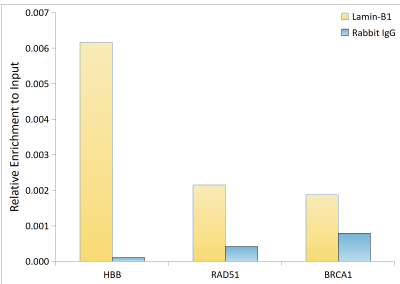
Validation Data



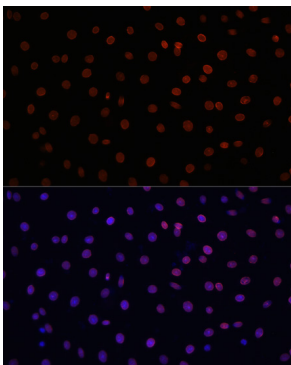
Western blot analysis of various lysates using Lamin B1 Rabbit pAb (A16910) at 1:1000 dilution. Secondary antibody: HRP Goat Anti-Rabbit IgG (H+L) (AS014) at 1:10000 dilution. Lysates/proteins: 25µg per lane. Blocking buffer: 3% nonfat dry milk in TBST. Detection: ECL Basic Kit (RM00020). Exposure time: 1min.



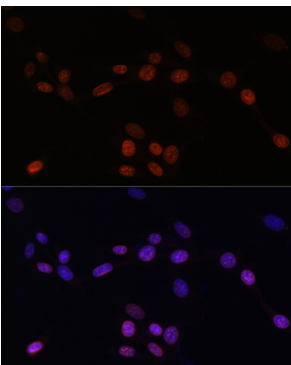
Immunoprecipitation of Lamin B1 in 300 µg extracts from Jurkat cells using 0.5 µg Lamin B1 Rabbit pAb (A16910). Western blot analysis was performed using Lamin B1 Rabbit pAb (A16910) at 1:1000 dilution.



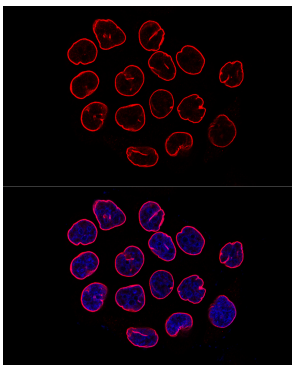
Chromatin immunoprecipitation was performed with cross-linked chromatin from HeLa, using Lamin-B1 Rabbit mAb (A16910) and rabbit IgG(AC042). The amount of immunoprecipitated DNA was checked by quantitative PCR. Histogram compares the ratio of the immunoprecipitated DNA versus the input.



Immunofluorescence analysis of C6 cells



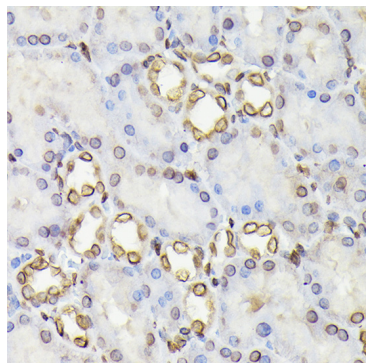
Immunofluorescence analysis of NIH/3T3



Confocal immunofluorescence analysis of

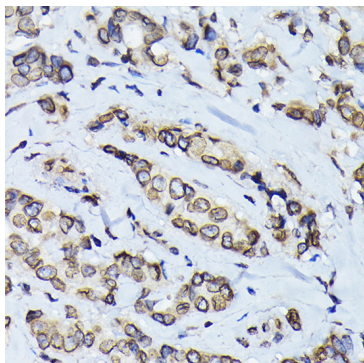
Validation Data

using Lamin B1 Rabbit pAb (A16910) at dilution of 1:100. Secondary antibody: Cy3 Goat Anti-Rabbit IgG (H+L) (AS007) at 1:500 dilution. Blue: DAPI for nuclear staining.



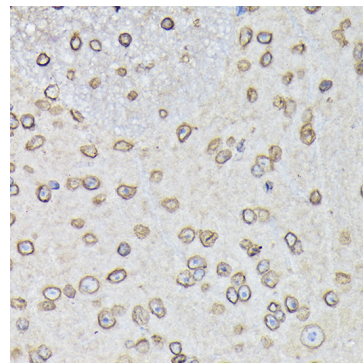
Immunohistochemistry analysis of Lamin B1 in paraffin-embedded rat kidney using Lamin B1 Rabbit pAb (A16910) at dilution of 1:100 (40x lens). Perform microwave antigen retrieval with 10 mM Tris/EDTA buffer pH 9.0 before commencing with IHC staining protocol.

cells using Lamin B1 Rabbit pAb (A16910) at dilution of 1:100. Secondary antibody: Cy3 Goat Anti-Rabbit IgG (H+L) (AS007) at 1:500 dilution. Blue: DAPI for nuclear staining.



Immunohistochemistry analysis of Lamin B1 in paraffin-embedded human breast cancer using Lamin B1 Rabbit pAb (A16910) at dilution of 1:100 (40x lens). Perform microwave antigen retrieval with 10 mM Tris/EDTA buffer pH 9.0 before commencing with IHC staining protocol.

HeLa cells using Lamin B1 Rabbit pAb (A16910) at dilution of 1:200. Blue: DAPI for nuclear staining.



Immunohistochemistry analysis of Lamin B1 in paraffin-embedded mouse spinal cord using Lamin B1 Rabbit pAb (A16910) at dilution of 1:100 (40x lens). Perform microwave antigen retrieval with 10 mM Tris/EDTA buffer pH 9.0 before commencing with IHC staining protocol.