

MAD2/MAD2L1 Rabbit pAb

Catalog No.: A16911

Basic Information

Observed MW

27kDa

Calculated MW

24kDa

Category

Primary antibody

Applications

ELISA, WB

Cross-Reactivity

Human, Mouse, Rat

Background

MAD2L1 is a component of the mitotic spindle assembly checkpoint that prevents the onset of anaphase until all chromosomes are properly aligned at the metaphase plate. MAD2L1 is related to the MAD2L2 gene located on chromosome 1. A MAD2 pseudogene has been mapped to chromosome 14.

Recommended Dilutions

WB 1:500 - 1:2000

Immunogen Information

Gene ID

4085

Swiss Prot

Q13257

Immunogen

Recombinant fusion protein containing a sequence corresponding to amino acids 1-205 of human MAD2/MAD2/MAD2L1 (NP_002349.1).

Synonyms

MAD2; HSMAD2; MAD2/MAD2L1

Contact

 | 400-999-6126

 | cn.market@abclonal.com.cn

 | www.abclonal.com.cn

Product Information

Source

Rabbit

Isotype

IgG

Purification

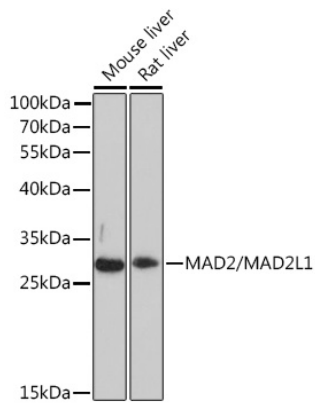
Affinity purification

Storage

Store at -20°C. Avoid freeze / thaw cycles.

Buffer: PBS with 0.01% thimerosal, 50% glycerol, pH7.3.

Validation Data



Western blot analysis of various lysates using MAD2/MAD2/MAD2L1 Rabbit pAb (A16911) at 1:3000 dilution.

Secondary antibody: HRP Goat Anti-Rabbit IgG (H+L) (AS014) at 1:10000 dilution.

Lysates/proteins: 25µg per lane.

Blocking buffer: 3% nonfat dry milk in TBST.

Detection: ECL Basic Kit (RM00020).

Exposure time: 90s.