

NDUFB1 Rabbit pAb

Catalog No.: A16925

Basic Information

Observed MW

11kDa

Calculated MW

7kDa

Category

Primary antibody

Applications

ELISA, WB, IF/ICC

Cross-Reactivity

Human, Mouse

Background

Involved in mitochondrial respiratory chain complex I assembly. Located in mitochondrion and nuclear speck. Part of mitochondrial respiratory chain complex I.

Recommended Dilutions

WB	1:500 - 1:2000
IF/ICC	1:50 - 1:100

Immunogen Information

Gene ID

4707

Swiss Prot

O75438

Immunogen

Recombinant fusion protein containing a sequence corresponding to amino acids 1-105 of human NDUFB1 (NP_004536.2).

Synonyms

MNLL; CI-MNLL; CI-SGDH; NDUFB1

Contact

 | 400-999-6126

 | cn.market@abclonal.com.cn

 | www.abclonal.com.cn

Product Information

Source

Rabbit

Isotype

IgG

Purification

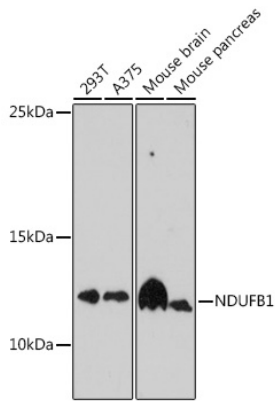
Affinity purification

Storage

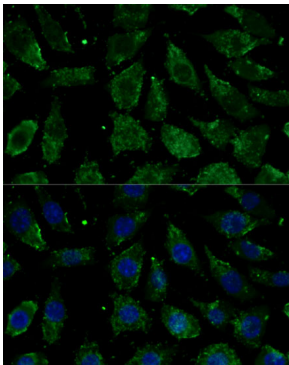
Store at -20°C. Avoid freeze / thaw cycles.

Buffer: PBS with 0.01% thimerosal, 50% glycerol, pH7.3.

Validation Data



Western blot analysis of various lysates using NDUFB1 Rabbit pAb (A16925) at 1:1000 dilution.
Secondary antibody: HRP Goat Anti-Rabbit IgG (H+L) (AS014) at 1:10000 dilution.
Lysates/proteins: 25µg per lane.
Blocking buffer: 3% nonfat dry milk in TBST.
Detection: ECL Basic Kit (RM00020).
Exposure time: 90s.



Immunofluorescence analysis of L929 cells using NDUFB1 Rabbit pAb (A16925) at dilution of 1:100. Secondary antibody: Cy3 Goat Anti-Rabbit IgG (H+L) (AS007) at 1:500 dilution. Blue: DAPI for nuclear staining.