

# NPY2R Rabbit pAb

Catalog No.: A16934

## Basic Information

### Observed MW

42kDa

### Calculated MW

43kDa

### Category

Primary antibody

### Applications

ELISA, WB

### Cross-Reactivity

Human

## Background

Predicted to enable calcium channel regulator activity and neuropeptide Y receptor activity. Involved in cardiac left ventricle morphogenesis and outflow tract morphogenesis. Located in cilium. Implicated in Huntington's disease; morbid obesity; and obesity. Biomarker of peripheral artery disease and temporal lobe epilepsy.

## Recommended Dilutions

WB 1:500 - 1:2000

## Immunogen Information

### Gene ID

4887

### Swiss Prot

P49146

### Immunogen

A synthetic peptide corresponding to a sequence within amino acids 300 to the C-terminus of human NPY2R (NP\_000901.1).

### Synonyms

NPY2-R; NPY2R

## Contact

☎ | 400-999-6126

✉ | [cn.market@abclonal.com.cn](mailto:cn.market@abclonal.com.cn)

🌐 | [www.abclonal.com.cn](http://www.abclonal.com.cn)

## Product Information

### Source

Rabbit

### Isotype

IgG

### Purification

Affinity purification

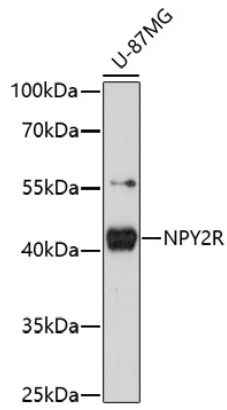
### Storage

Store at -20°C. Avoid freeze / thaw cycles.

Buffer: PBS with 0.01% thimerosal, 50% glycerol, pH7.3.

## Validation Data

---



Western blot analysis of lysates from U-87MG cells, using NPY2R Rabbit pAb (A16934) at 1:1000 dilution.  
Secondary antibody: HRP Goat Anti-Rabbit IgG (H+L) (AS014) at 1:10000 dilution.  
Lysates/proteins: 25µg per lane.  
Blocking buffer: 3% nonfat dry milk in TBST.  
Detection: ECL Basic Kit (RM00020).  
Exposure time: 180s.