

PDHA2 Rabbit pAb

Catalog No.: A16944

Basic Information

Observed MW

43kDa

Calculated MW

43kDa

Category

Primary antibody

Applications

ELISA, WB, IHC-P

Cross-Reactivity

Mouse, Rat

Background

Predicted to enable pyruvate dehydrogenase (acetyl-transferring) activity. Predicted to contribute to pyruvate dehydrogenase (NAD⁺) activity. Predicted to be involved in acetyl-CoA biosynthetic process from pyruvate. Predicted to act upstream of or within mitochondrial acetyl-CoA biosynthetic process from pyruvate. Located in mitochondrion. Is expressed in nervous system and testis. Orthologous to human PDHA2 (pyruvate dehydrogenase E1 subunit alpha 2).

Recommended Dilutions

WB 1:500 - 1:2000

IHC-P 1:50 - 1:200

Immunogen Information

Gene ID

18598

Swiss Prot

P35487

Immunogen

A synthetic peptide corresponding to a sequence within amino acids 300 to the C-terminus of mouse PDHA2 (NP_032837.1).

Synonyms

Pdhal; PDHA2

Contact

☎ | 400-999-6126

✉ | cn.market@abclonal.com.cn

🌐 | www.abclonal.com.cn

Product Information

Source

Rabbit

Isotype

IgG

Purification

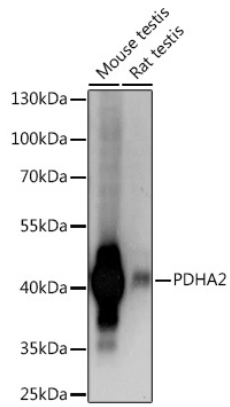
Affinity purification

Storage

Store at -20°C. Avoid freeze / thaw cycles.

Buffer: PBS with 0.01% thimerosal, 50% glycerol, pH7.3.

Validation Data



Western blot analysis of various lysates using PDHA2 Rabbit pAb (A16944) at 1:1000 dilution.
Secondary antibody: HRP Goat Anti-Rabbit IgG (H+L) (AS014) at 1:10000 dilution.
Lysates/proteins: 25 μ g per lane.
Blocking buffer: 3% nonfat dry milk in TBST.
Detection: ECL Basic Kit (RM00020).
Exposure time: 1s.