

# PNN Rabbit pAb

Catalog No.: A16955

## Basic Information

### Observed MW

140kDa

### Calculated MW

82kDa

### Category

Primary antibody

### Applications

ELISA, WB

### Cross-Reactivity

Human, Rat

## Background

Enables RNA binding activity. Predicted to be involved in cell adhesion and mRNA splicing, via spliceosome. Predicted to act upstream of or within cell-cell adhesion. Located in nuclear speck. Part of catalytic step 2 spliceosome. Colocalizes with exon-exon junction complex.

## Recommended Dilutions

WB 1:500 - 1:2000

## Immunogen Information

### Gene ID

5411

### Swiss Prot

Q9H307

### Immunogen

A synthetic peptide corresponding to a sequence within amino acids 1-100 of human PNN (NP\_002678.2).

### Synonyms

DRS; DRSP; SDK3; memA; PNN

## Contact

☎ | 400-999-6126

✉ | [cn.market@abclonal.com.cn](mailto:cn.market@abclonal.com.cn)

🌐 | [www.abclonal.com.cn](http://www.abclonal.com.cn)

## Product Information

### Source

Rabbit

### Isotype

IgG

### Purification

Affinity purification

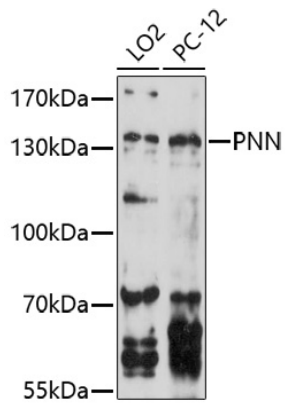
### Storage

Store at -20°C. Avoid freeze / thaw cycles.

Buffer: PBS with 0.01% thimerosal, 50% glycerol, pH7.3.

## Validation Data

---



Western blot analysis of various lysates using PNN Rabbit pAb (A16955) at 1:1000 dilution.  
Secondary antibody: HRP Goat Anti-Rabbit IgG (H+L) (AS014) at 1:10000 dilution.  
Lysates/proteins: 25 $\mu$ g per lane.  
Blocking buffer: 3% nonfat dry milk in TBST.  
Detection: ECL Enhanced Kit (RM00021).  
Exposure time: 90s.