

# PROP1 Rabbit pAb

Catalog No.: A16963

## Basic Information

### Observed MW

25kDa

### Calculated MW

25kDa

### Category

Primary antibody

### Applications

WB, ELISA

### Cross-Reactivity

Mouse

## Background

This gene encodes a paired-like homeodomain transcription factor in the developing pituitary gland. Expression occurs prior to and is required for expression of pou domain transcription factor 1, which is responsible for pituitary development and hormone expression. Mutations in this gene have been associated with combined pituitary hormone deficiency-2 as well as deficiencies in luteinizing hormone, follicle-stimulating hormone, growth hormone, prolactin, and thyroid-stimulating hormone.

## Recommended Dilutions

**WB** 1:500 - 1:2000

**ELISA** Recommended starting concentration is 1 µg/mL. Please optimize the concentration based on your specific assay requirements.

## Immunogen Information

### Gene ID

5626

### Swiss Prot

O75360

### Immunogen

Synthetic peptide. This information is considered to be commercially sensitive.

### Synonyms

CPHD2; PROP-1; PROP1

## Contact

☎ | 400-999-6126

✉ | [cn.market@abclonal.com.cn](mailto:cn.market@abclonal.com.cn)

🌐 | [www.abclonal.com.cn](http://www.abclonal.com.cn)

## Product Information

### Source

Rabbit

### Isotype

IgG

### Purification

Affinity purification

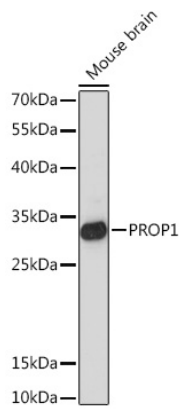
### Storage

Store at -20°C. Avoid freeze / thaw cycles.

Buffer: PBS with 0.01% thimerosal, 50% glycerol, pH7.3.

## Validation Data

---



Western blot analysis of lysates from Mouse brain, using PROP1 Rabbit pAb (A16963) at 1:1000 dilution.  
Secondary antibody: HRP-conjugated Goat anti-Rabbit IgG (H+L) (AS014) at 1:10000 dilution.  
Lysates/proteins: 25µg per lane.  
Blocking buffer: 3% nonfat dry milk in TBST.  
Detection: ECL Basic Kit (RM00020).  
Exposure time: 50s.