

THBS1 Rabbit pAb

Catalog No.: A16985

Basic Information

Observed MW

Refer to figures

Calculated MW

129kDa

Category

Primary antibody

Applications

ELISA, IHC-P

Cross-Reactivity

Mouse

Background

The protein encoded by this gene is a subunit of a disulfide-linked homotrimeric protein. This protein is an adhesive glycoprotein that mediates cell-to-cell and cell-to-matrix interactions. This protein can bind to fibrinogen, fibronectin, laminin, type V collagen and integrins alpha-V/beta-1. This protein has been shown to play roles in platelet aggregation, angiogenesis, and tumorigenesis.

Recommended Dilutions

IHC-P 1:50 - 1:200

Immunogen Information

Gene ID

7057

Swiss Prot

P07996

Immunogen

A synthetic peptide corresponding to a sequence within amino acids 150-250 of human THBS1 (NP_003237.2).

Synonyms

TSP; THBS; TSP1; TSP-1; THBS-1; THBS1

Contact

☎ | 400-999-6126

✉ | cn.market@abclonal.com.cn

🌐 | www.abclonal.com.cn

Product Information

Source

Rabbit

Isotype

IgG

Purification

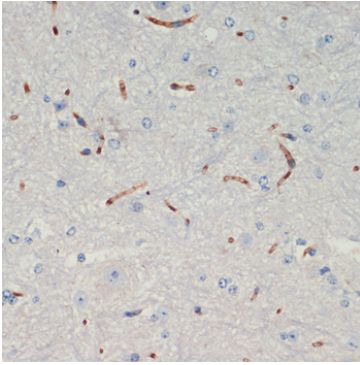
Affinity purification

Storage

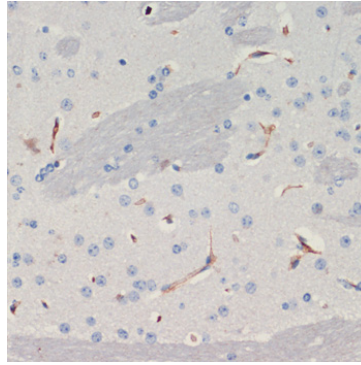
Store at -20°C. Avoid freeze / thaw cycles.

Buffer: PBS with 0.02% sodium azide, 50% glycerol, pH7.3.

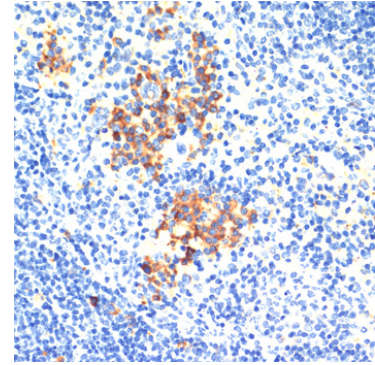
Validation Data



Immunohistochemistry analysis of paraffin-embedded mouse spinal cord using THBS1 Rabbit pAb (A16985) at dilution of 1:200 (40x lens). Perform microwave antigen retrieval with 10 mM PBS buffer pH 7.2 before commencing with IHC staining protocol.



Immunohistochemistry analysis of paraffin-embedded mouse brain using THBS1 Rabbit pAb (A16985) at dilution of 1:200 (40x lens). Perform microwave antigen retrieval with 10 mM PBS buffer pH 7.2 before commencing with IHC staining protocol.



Immunohistochemistry analysis of paraffin-embedded mouse spleen using THBS1 Rabbit pAb (A16985) at dilution of 1:200 (40x lens). Perform microwave antigen retrieval with 10 mM PBS buffer pH 7.2 before commencing with IHC staining protocol.