

# RB Rabbit pAb

Catalog No.: A17005 **3 Publications**

## Basic Information

### Observed MW

110 kDa

### Calculated MW

106 kDa

### Category

Primary antibody

### Applications

WB, IHC-P, IF/ICC, ELISA

### Cross-Reactivity

Human, Mouse, Rat

## Background

The protein encoded by this gene is a negative regulator of the cell cycle and was the first tumor suppressor gene found. The encoded protein also stabilizes constitutive heterochromatin to maintain the overall chromatin structure. The active, hypophosphorylated form of the protein binds transcription factor E2F1. Defects in this gene are a cause of childhood cancer retinoblastoma (RB), bladder cancer, and osteogenic sarcoma.

## Recommended Dilutions

**WB** 1:500 - 1:5000**IF/ICC** 1:50 - 1:100**IHC-P** 1:50 - 1:100**ELISA** Recommended starting concentration is 1 µg/mL. Please optimize the concentration based on your specific assay requirements.

## Immunogen Information

### Gene ID

5925

### Swiss Prot

P06400

### Immunogen

Recombinant protein (or fragment). This information is considered to be commercially sensitive.

### Synonyms

RB; pRb; OSRC; pp110; p105-Rb; PPP1R130; p110-RB1

## Contact

 | 400-999-6126 | [cn.market@abclonal.com.cn](mailto:cn.market@abclonal.com.cn) | [www.abclonal.com.cn](http://www.abclonal.com.cn)

## Product Information

### Source

Rabbit

### Isotype

IgG

### Purification

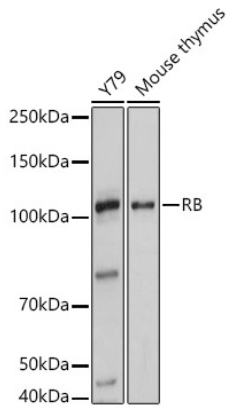
Affinity purification

### Storage

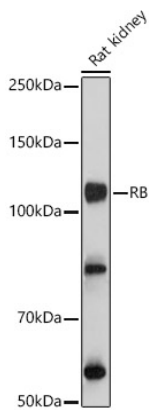
Store at -20°C. Avoid freeze / thaw cycles.

Buffer: PBS, pH 7.3, containing 50% glycerol. Preserved with Proclin300 or sodium azide. May contain 0.05% BSA as specified on the Certificate of Analysis.

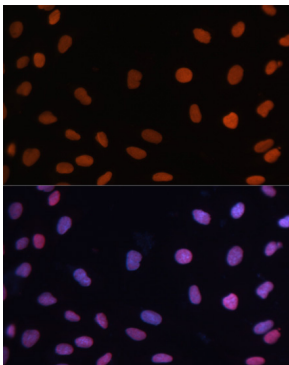
## Validation Data



Western blot analysis of various lysates using RB Rabbit pAb (A17005) at 1:1000 dilution.  
Secondary antibody: HRP-conjugated Goat anti-Rabbit IgG (H+L) (AS014) at 1:10000 dilution.  
Lysates/proteins: 25µg per lane.  
Blocking buffer: 3% nonfat dry milk in TBST.  
Detection: ECL Basic Kit (RM00020).  
Exposure time: 30s.



Western blot analysis of lysates from Rat kidney, using RB Rabbit pAb (A17005) at 1:1000 dilution.  
Secondary antibody: HRP-conjugated Goat anti-Rabbit IgG (H+L) (AS014) at 1:10000 dilution.  
Lysates/proteins: 25µg per lane.  
Blocking buffer: 3% nonfat dry milk in TBST.  
Detection: ECL Basic Kit (RM00020).  
Exposure time: 180s.



Immunofluorescence analysis of U-2 OS cells using RB Rabbit pAb (A17005) at dilution of 1:100. Secondary antibody: Cy3-conjugated Goat anti-Rabbit IgG (H+L) (AS007) at 1:500 dilution. Blue: DAPI for nuclear staining.