

BRSK2 Rabbit pAb

Catalog No.: A17042

Basic Information

Observed MW

78-90kDa

Calculated MW

82kDa

Category

Primary antibody

Applications

ELISA, WB

Cross-Reactivity

Human, Mouse

Background

Enables several functions, including ATP binding activity; ATPase binding activity; and protein kinase activity. Involved in several processes, including cellular protein metabolic process; intrinsic apoptotic signaling pathway in response to endoplasmic reticulum stress; and regulation of insulin secretion involved in cellular response to glucose stimulus. Located in centrosome and endoplasmic reticulum.

Recommended Dilutions

WB 1:500 - 1:1000

Immunogen Information

Gene ID

9024

Swiss Prot

Q8IWQ3

Immunogen

A synthetic peptide corresponding to a sequence within amino acids 200-300 of human BRSK2 (NP_001243556.1).

Synonyms

SAD1; SADA; SAD-A; STK29; PEN11B; C11orf7; BRSK2

Contact

☎ | 400-999-6126

✉ | cn.market@abclonal.com.cn

🌐 | www.abclonal.com.cn

Product Information

Source

Rabbit

Isotype

IgG

Purification

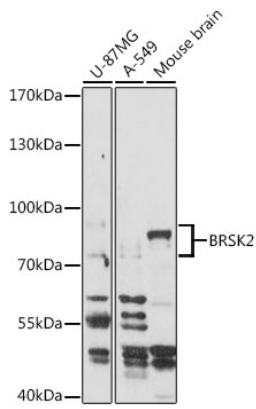
Affinity purification

Storage

Store at -20°C. Avoid freeze / thaw cycles.

Buffer: PBS with 0.01% thimerosal, 50% glycerol, pH7.3.

Validation Data



Western blot analysis of various lysates using BRSK2 Rabbit pAb (A17042) at 1:1000 dilution.
Secondary antibody: HRP Goat Anti-Rabbit IgG (H+L) (AS014) at 1:10000 dilution.
Lysates/proteins: 25µg per lane.
Blocking buffer: 3% nonfat dry milk in TBST.
Detection: ECL Basic Kit (RM00020).
Exposure time: 90s.